



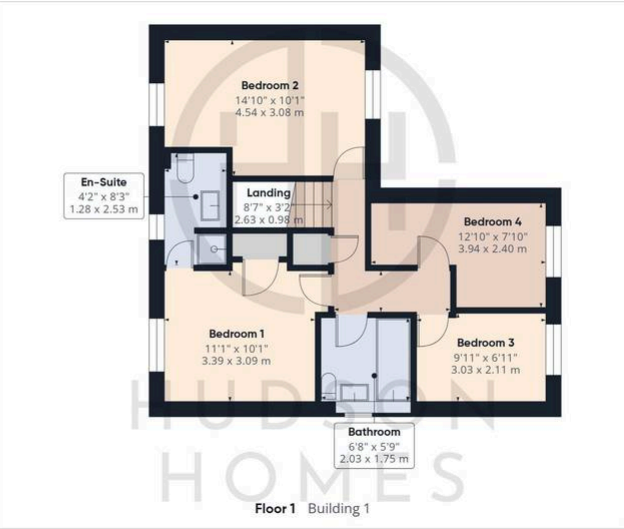
## 25 Lima Way, Peterborough

£345,000 Freehold

FAMILY HOME SET WITHIN A CUL-DE-SAC ON A MODERN DEVELOPMENT • INTEGRATED KITCHEN/BREAKFAST & TWO RECEPTION ROOMS • CLOAKROOM / BATHROOM / EN-SUITE • BEAUTIFUL REAR GARDEN WITH TWO SEPARATE AREAS • DRIVEWAY PARKING & TANDEM GARAGE • INTERNAL FLOOR AREA 1,227 sqft • COUNCIL TAX BAND D - £2186 PER YEAR • WALKING DISTANCE TO LOCAL AMENITIES INCLUDING MORRISONS • SHORT WALK TO SHOPS & SCHOOLS • RAIL LINKS ACROSS THE CITY



HUDSON  
HOMES



**Approximate total area<sup>(1)</sup>**  
 1455 ft<sup>2</sup>  
 135.2 m<sup>2</sup>



(1) Excluding balconies and terraces

While every attempt has been made to ensure accuracy, all measurements are approximate, not to scale. This floor plan is for illustrative purposes only.

Calculations are based on RICS IPMS 3C standard.

GIRAFFE360

You can include any text here. The text can be modified upon generating your brochure.