



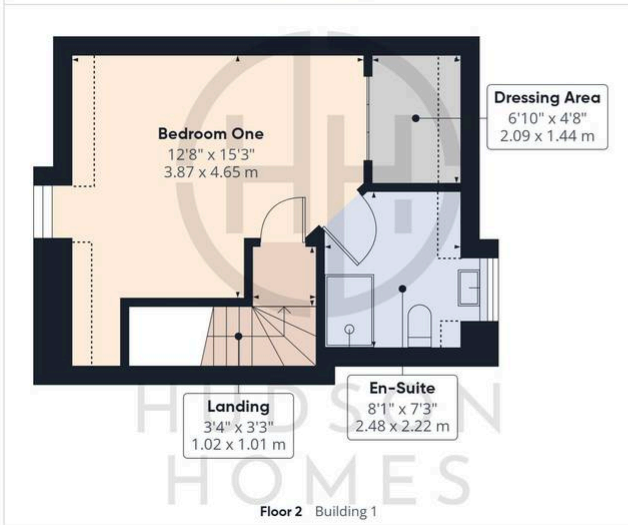
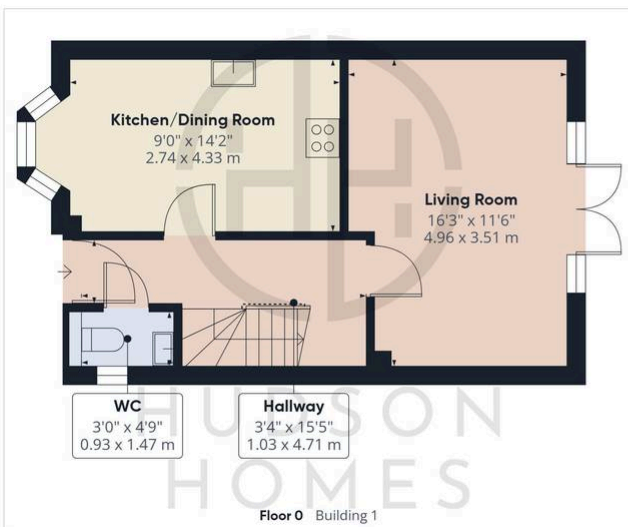
45 Jupiter Avenue, Peterborough

£300,000 Freehold

Finished to a high standard and maintained in show-home condition • Impressive primary 2nd floor suite offering a dedicated walk-in dressing area, large en-suite shower room and contemporary panelled detailing and oak flooring • Stylish refitted kitchen/diner finished in an on-trend olive palette and complete with integrated appliances • Inviting living room enhanced by feature wall panelling and French doors flowing out to the rear garden • Bedroom repurposed as a stylish bar/TV room with bespoke seating and drinks units, easily reverted to a bedroom if desired • Recently refitted ground-floor cloakroom complemented by a contemporary first-floor bathroom • Ample parking provision including a single garage, multi-vehicle driveway and convenient EV charging point • Excellent location with easy access to the A1(M) and A605. • Spacious accommodation with a total area of around 1,195 sq ft internally • Impressive EPC B rating paired with cost-effective gas central heating • Close proximity to local facilities including Morrisons supermarket, St Michael's CofE Primary School and additional retail options



HUDSON
HOMES



Approximate total area⁽¹⁾
1257 ft²
116.8 m²

Reduced headroom
36 ft²
3.4 m²

(1) Excluding balconies and terraces

Reduced headroom
..... Below 5 ft/1.5 m

Calculations reference the RICS IPMS 3C standard. Measurements are approximate and not to scale. This floor plan is intended for illustration only.

GIRAFFE360

You can include any text here. The text can be modified upon generating your brochure.