

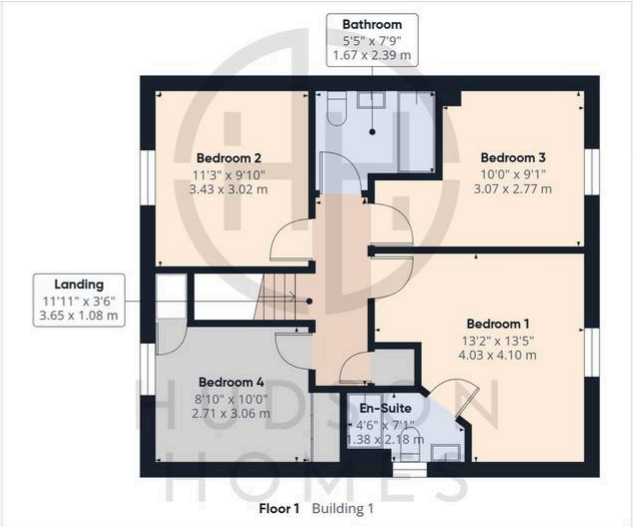
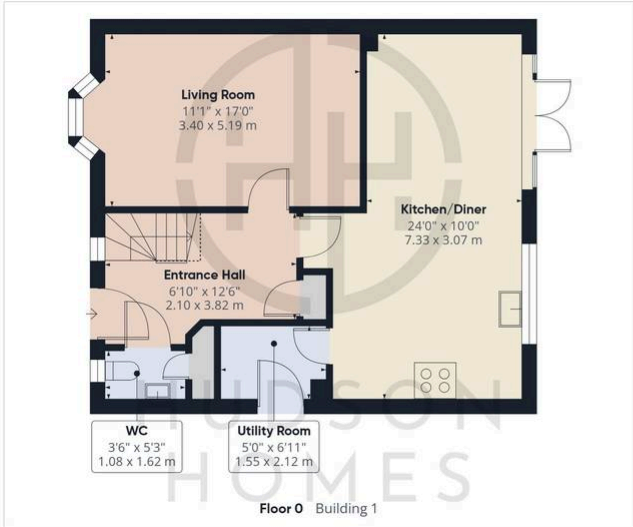


7 Saunton Grove, Hampton Beach

£450,000 Freehold

Stunning detached home nestled in a private cul-de-sac within a modern estate • Four bedrooms • Spacious kitchen/diner with integrated appliances and a central island • Two reception rooms • En-suite to bedroom 1 • Driveway and garage • Internal floor area 1390 sqfr • Council tax band E • Within close proximity to nearby lakes, Serpentine green, schools and access to the A1 • Still under NHBC warranty, annual estate charge - TBC





Approximate total area⁽¹⁾
 1390 ft²
 129.2 m²

Reduced headroom
 9 ft²
 0.8 m²



(1) Excluding balconies and terraces

Reduced headroom
 ----- Below 5 ft/1.5 m

Calculations reference the RICS IPMS 3C standard. Measurements are approximate and not to scale. This floor plan is intended for illustration only.

GIRAFFE360

You can include any text here. The text can be modified upon generating your brochure.