

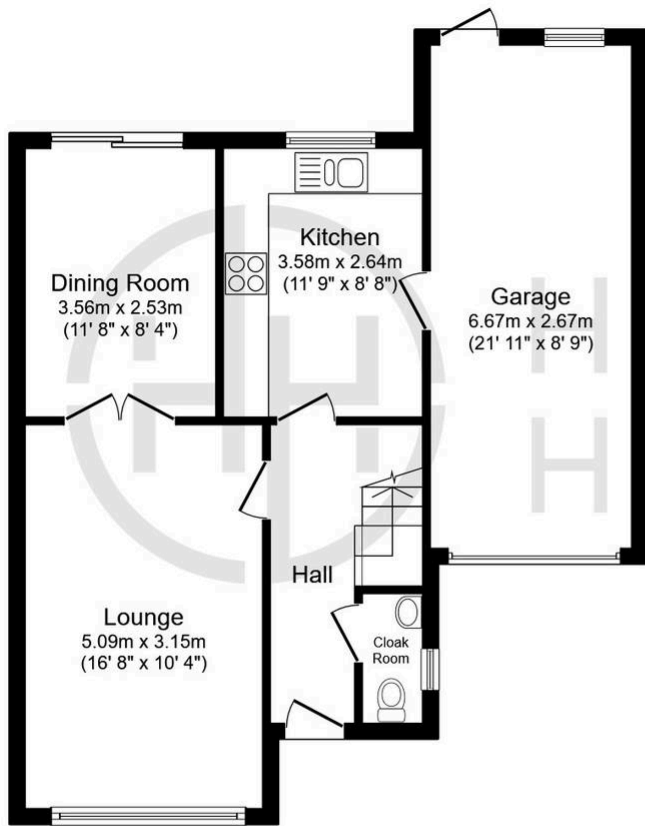
12 Faraday Close, Yaxley

£315,000 Freehold

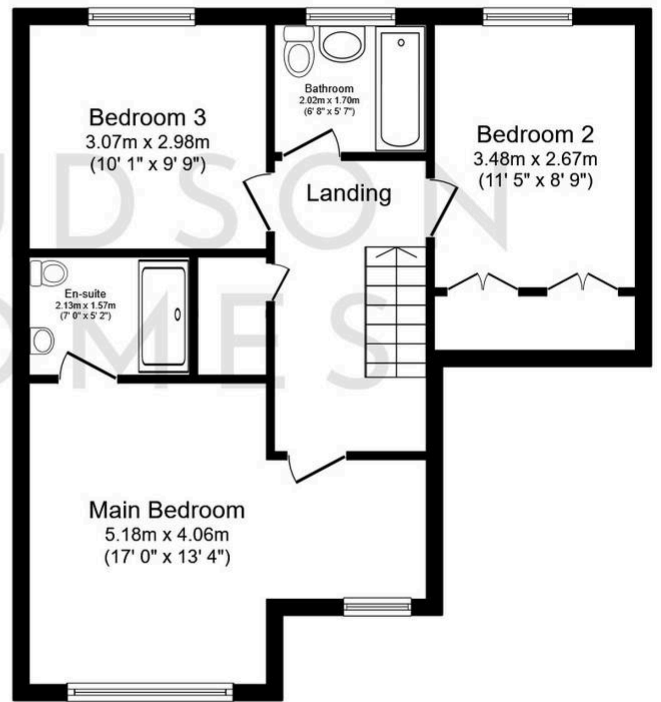
Three double bedrooms • Modern kitchen with integrated appliances • Quiet cul-de-sac location within a popular estate • Two reception rooms • 17ft Master bedroom, leading to en-suite • Driveway and garage • Walking distance to local primary schools • Fantastic access for those commuting along the A1(m) • Internal floor area 1168 Sqft • Council tax band C



HUDSON
HOMES



Ground Floor



First Floor

Total floor area 117.7 sq.m. (1,267 sq.ft.) approx

This plan is for illustration purposes only and may not be representative of the property. Plan not to scale. Powered by PropertyBox

You can include any text here. The text can be modified upon generating your brochure.