

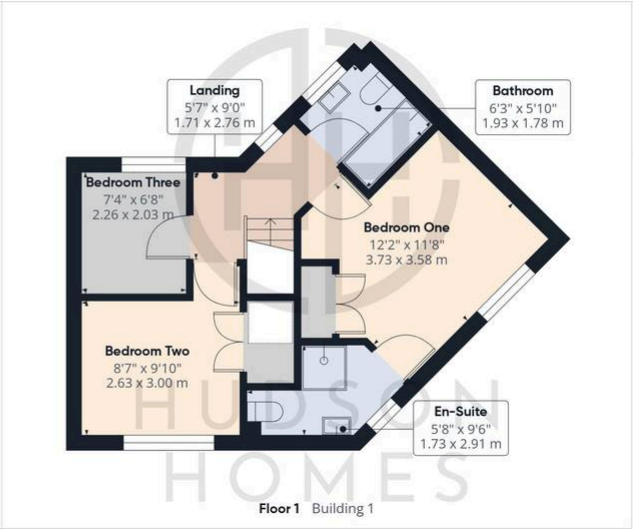
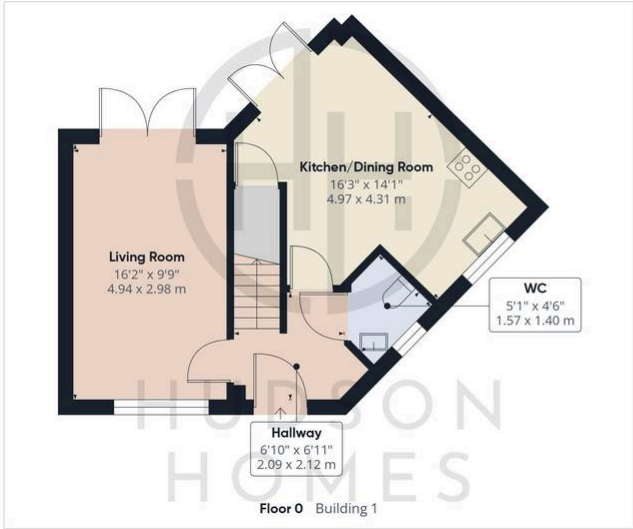


HUDSON
HOMES



35 Millport Drive, Eye £270,000 Freehold

Stylish integrated kitchen/dining space with modern upgrades and elegant French doors opening directly onto the garden. • Bright dual-aspect lounge running the full depth of the home, complemented by elegant French doors opening directly into the garden. • Spacious primary bedroom featuring double fitted wardrobes and a stylish refitted en-suite completed in September 2025. • Modern family bathroom with a shower over the bath, complemented by a convenient downstairs cloakroom. • South-facing rear garden enjoys excellent natural light throughout the day, featuring outside power sockets and a smart patio area ideal for relaxing or entertaining. • 23'6" x 10'2" Garage - Excellent-sized garage equipped with power and lighting, roof storage, ideal for secure parking, or workshop use. • Owned Solar Panels - Benefitting from fully owned solar panels and an impressive Energy Rating B, offering lower running costs and improved efficiency. • Generous 840 sq ft Layout - Well-planned internal space offering comfortable room proportions and excellent day-to-day usability. • Excellent School Access - A short walk to Eye C of E Primary School and within catchment for the highly regarded Arthur Mellows Village College. • Just 5.2 miles from the train station and city centre, with strong road connections to the A47 and A605.



Approximate total area⁽¹⁾
 1074 ft²
 99.6 m²



(1) Excluding balconies and terraces

Calculations reference the RICS IPMS 3C standard. Measurements are approximate and not to scale. This floor plan is intended for illustration only.

GIRAFFE360

Hudson Homes

8 Crusader Court Yaxley PE7 3PU

01733 788 222