

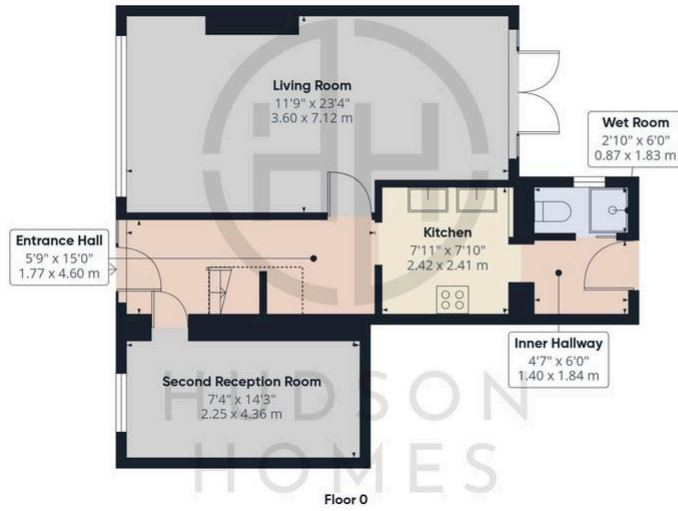


32 Highfield Walk, Yaxley

£220,000 Freehold

No forward chain • Three bedrooms • Requires modernisation throughout • Two reception rooms • Two bathrooms • Off road parking & garage • Internal floor area 961 SQFT • Council tax band B • Walking distance to amenities, schools and Doctors surgery



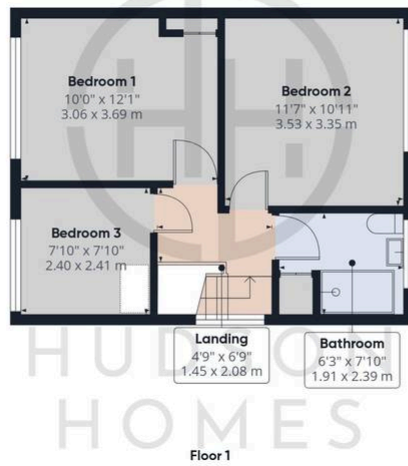


Approximate total area

961 ft²
89.4 m²

Reduced headroom

15 ft²
1.4 m²



(1) Excluding balconies and terraces

Reduced headroom

..... Below 5 ft/1.5 m

Calculations reference the RICS IPMS 3C standard. Measurements are approximate and not to scale. This floor plan is intended for illustration only.

GIRAFFE360

You can include any text here. The text can be modified upon generating your brochure.