



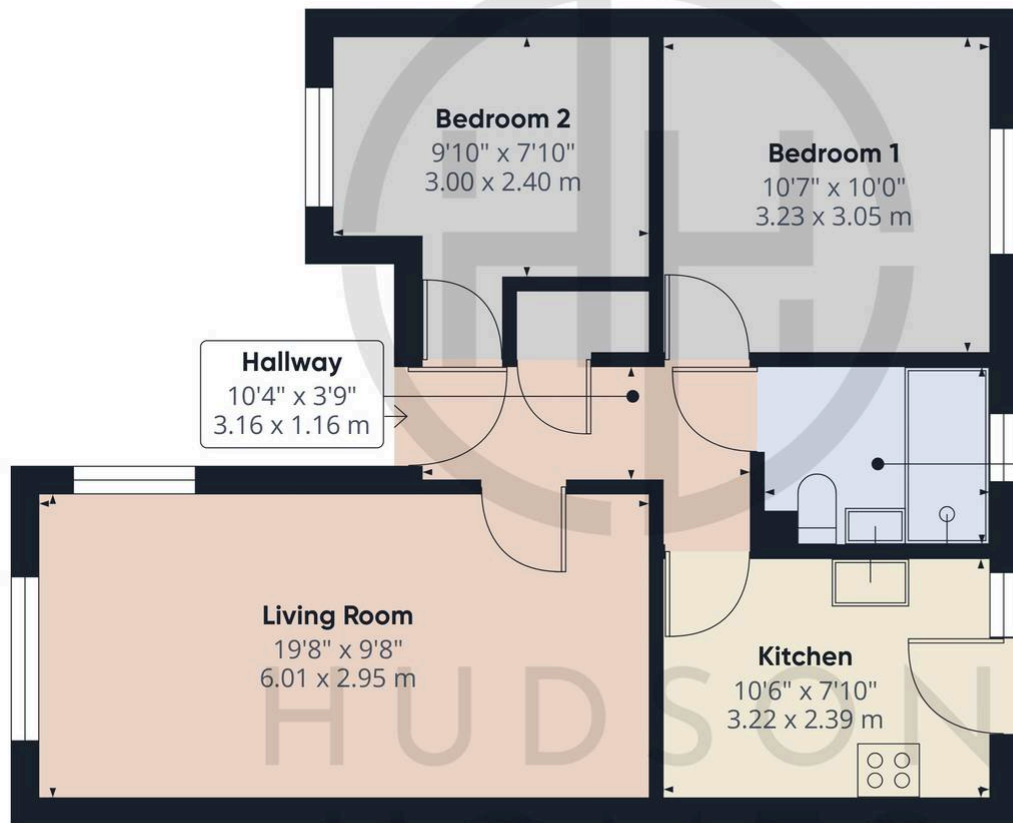
HUDSON
HOMES



21 Nightingale Court, Peterborough

£147,000 Leasehold

Offered for sale with no forward chain, enabling a quicker and smoother purchase. • Over-55s semi-detached bungalow, forming part of a sought-after age-restricted development. • Fitted kitchen with electric hob, oven and extractor hood, with door providing direct access to the rear garden. • Well-planned layout featuring two bedrooms and a modern shower room. • Attractive rear garden complete with practical garden shed. • Ideal for those looking to downsize in preparation for or during retirement. • Service charge: £298 per calendar month • Council Tax Band B - £1700 per year • Internal floor area: 564 sq ft. • Within walking distance of local bus routes and close to major road networks providing convenient access into the city. • Conveniently located close to shops, doctors, and a full range of local amenities.



Approximate total area⁽¹⁾
564 ft²
52.4 m²

(1) Excluding balconies and terraces

Calculations reference the RICS IPMS 3C standard. Measurements are approximate and not to scale. This floor plan is intended for illustration only.

GIRAFFE360

You can include any text here. The text can be modified upon generating your brochure.