



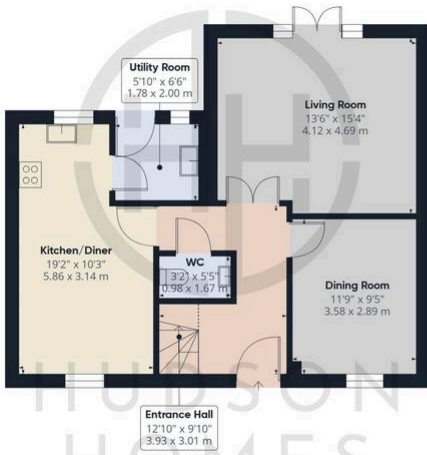
11 Foxglove Close, Yaxley

£337,000 Freehold

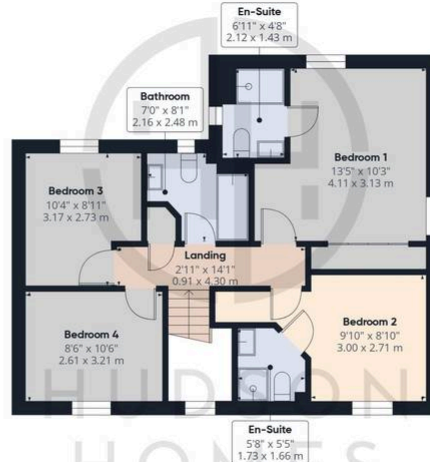
No forward chain • Four bedroom family home • Two en-suites • Two garages • Spacious kitchen/diner with integrated appliances • two reception rooms • Utility room & wc • Nestled in a quiet location within a modern estate • Council tax band C • Internal floor area 1588 Sqft



HUDSON
HOMES



Floor 0 Building 1



Floor 1 Building 1



Floor 0 Building 2



Approximate total area⁽¹⁾

1588 ft²
147.7 m²

Reduced headroom

8 ft²
0.8 m²

(1) Excluding balconies and terraces

Reduced headroom

..... Below 5 ft/1.5 m

Calculations reference the RICS IPMS 3C standard. Measurements are approximate and not to scale. This floor plan is intended for illustration only.

GIRAFFE360

Hudson Homes Limited

8 Crusader Court

Yaxley

PE7 3PU