



HUDSON
HOMES



35 Bellmans Grove, Whittlesey

£210,000 Freehold

Offered with no forward chain, providing a smooth and swift purchase opportunity. • Cosmetic updating required, offering an excellent opportunity to personalise and add value. • Kitchen/breakfast room with side access door, offering practical entry to the garden and outdoor spaces. • Spacious living room with double doors and sliding patio doors. • Modern shower room featuring a walk-in shower. • Single garage with driveway parking, providing secure storage and off-road convenience. • Internal floor area of approximately 710 sq ft, providing well-proportioned living accommodation. • Council Tax for a Band B property with a charge of £1,892. • Conveniently located close to the town centre and local amenities. • Situated in a quiet cul-de-sac, offering a peaceful and private setting.

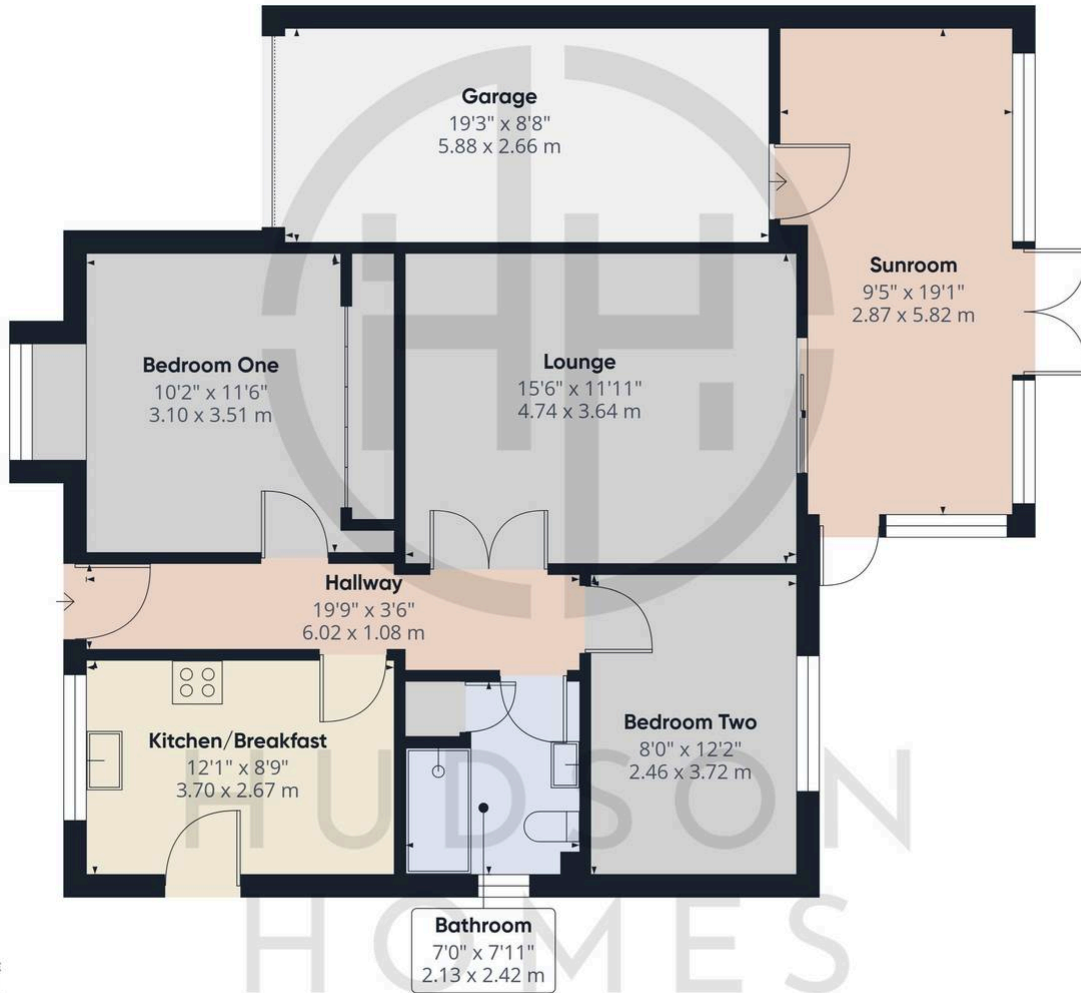


Approximate total area⁽¹⁾
987 ft²
91.8 m²

(1) Excluding balconies and terraces

Calculations reference the RICS IPMS 3C standard. Measurements are approximate and not to scale. This floor plan is intended for illustration only.

GIRAFFE360



You can include any text here. The text can be modified upon generating your brochure.