



6 Stephenson Close, Yaxley

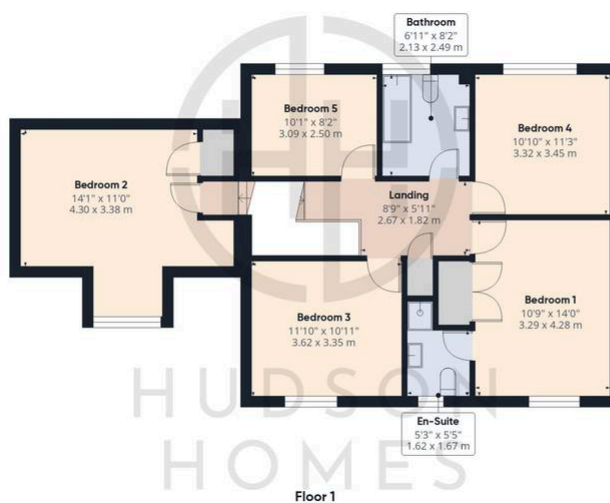
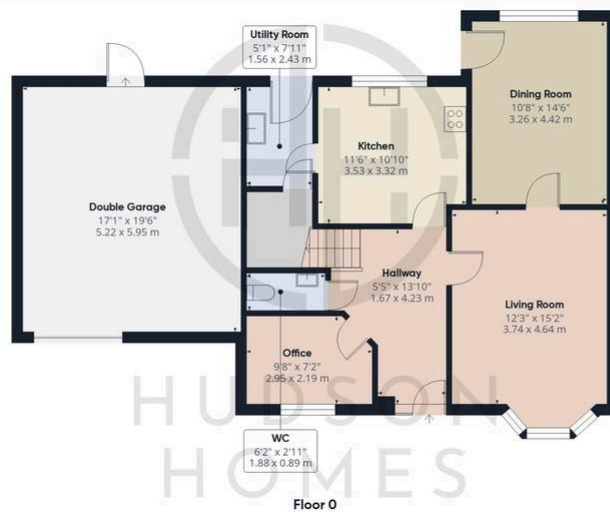
£490,000 Freehold

EXTENDED DETACHED FAMILY HOME • THREE RECEPTION ROOMS • UTILITY & CLOAKROOM • FIVE DOUBLE BEDROOMS • EN-SUITE & FITTED WARDROBES TO BEDROOM ONE • SPACIOUS REAR GARDEN, MAINLY LAID TO LAWN WITH COURTESY DOOR INTO GARAGE • DOUBLE GARAGE & DRIVEWAY PARKING • SOLAR PANELS WITH FEED IN TARIFF & HOME BATTERIES, MAKING THIS HOME VERY COST EFFICIENT • INTERNAL FLOOR AREA 1,765

sq ft • COULDN'T BE BUILT FOR LESS THAN £32 PER YEAR



HUDSON
HOMES



Approximate total area⁽¹⁾

1963 ft²
182.4 m²

Reduced headroom

1 ft²
0.1 m²

(1) Excluding balconies and terraces

Reduced headroom

..... Below 5 ft/1.5 m

Calculations reference the RICS IPMS 3C standard. Measurements are approximate and not to scale. This floor plan is intended for illustration only.

GIRAFFE360

You can include any text here. The text can be modified upon generating your brochure.