

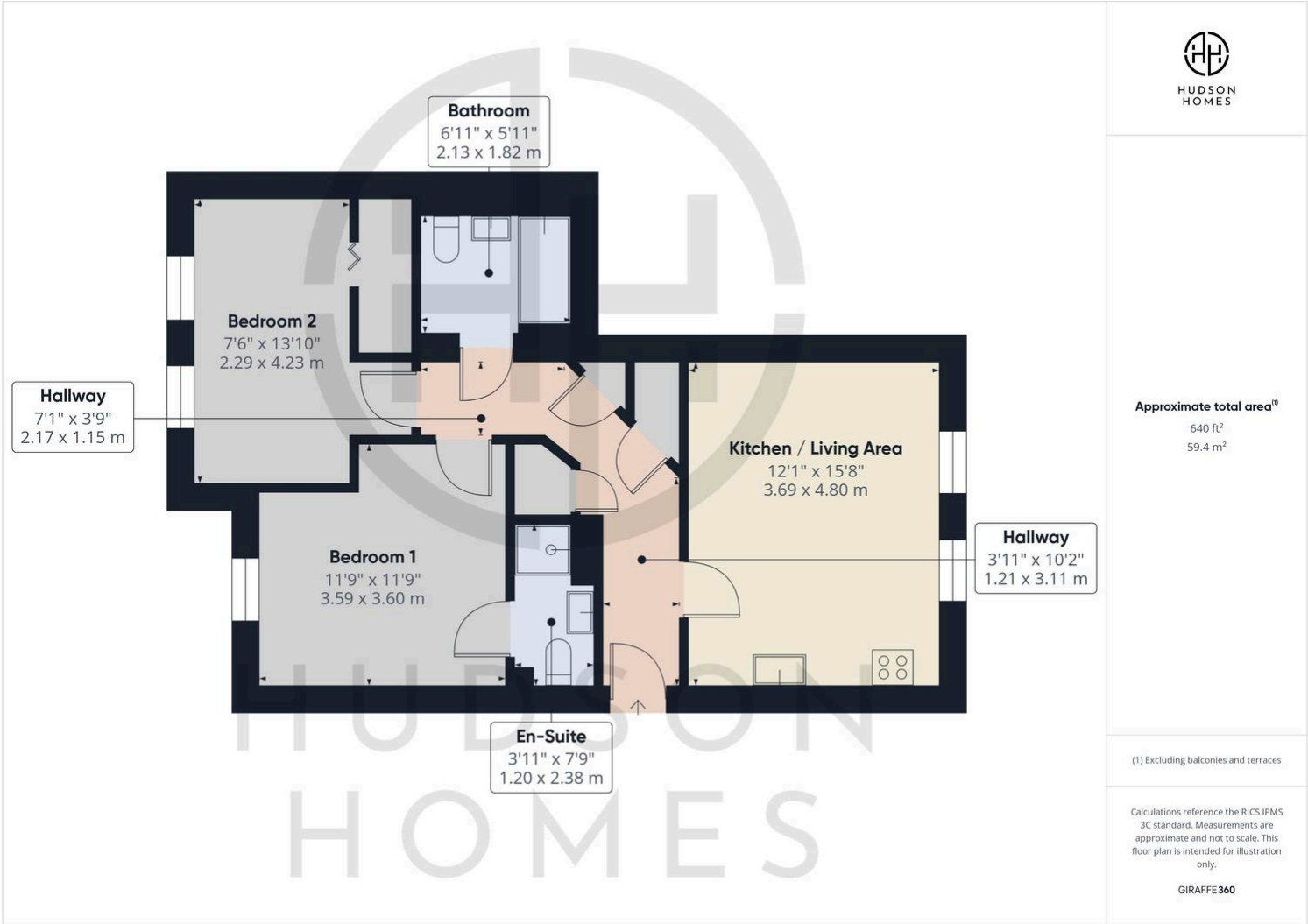
23 Central Court, North Street

£139,995 | £850 pcm Leasehold

NO FORWARD CHAIN • 2nd FLOOR FLAT - CITY CENTRE LOCATION • OPEN PLAN LIVING/KITCHEN/DINING • TWO DOUBLE BEDROOMS • BATHROOM & EN-SUITE SHOWER ROOM • SECURE GATED PARKING SPACE • 250 YEAR LEASE STARTED in 2015 (240 years remaining) • GROUND RENT £300 PER ANNUM • COUNCIL TAX BAND B £1700 PER YEAR • 5 MINUTE WALK TO PETERBOROUGH TRAIN STATION



HUDSON
HOMES



Hudson Homes
8 Crusader Court, Yaxley, PE7 3PU
01733 788222