



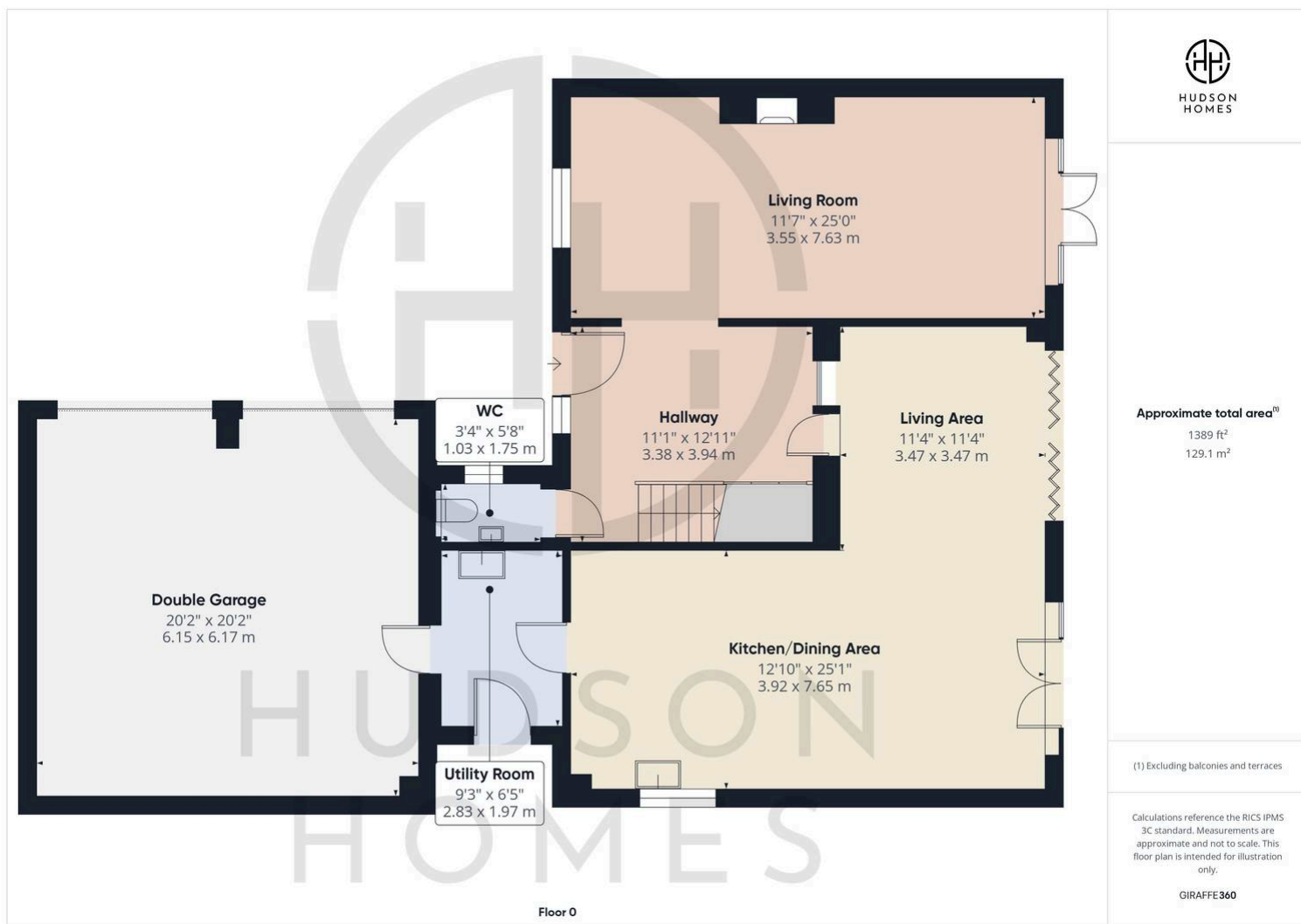
## 448b March Road, Whittlesey

£550,000 Freehold

EXECUTIVE DETACHED FAMILY HOME • OPEN PLAN KITCHEN/DINING WITH INTEGRATED APPLIANCES & QUARTZ WORK SURFACES • FEATURE LOG BURNER & CEILING TRAY WITH L.E.D LIGHTING IN LIVING ROOM • TWO EN-SUITES & TWO DRESSING ROOMS(BEDROOMS 1 & 2) • UNDERFLOOR HEATING THROUGHOUT DOWNSTAIRS & IN THE EN-SUITE TO BEDROOM 1 • FEATURE CUSTOM MADE STEEL DOORS FROM HALLWAY TO KITCHEN/DINER ALLOWING FOR COPIOUS LIGHT • AIR CONDITIONING UNITS IN TWO BEDROOMS & KITCHEN/DINER • AMPLE PARKING, DOUBLE GARAGE & EV CHARGING POINT • INTERNAL FLOOR AREA 2656 SQFT • COUNCIL TAX BAND

E





8 Crusader court, Yaxley  
PE7 3PU

info@hudson-homes.co.uk

01733 788222