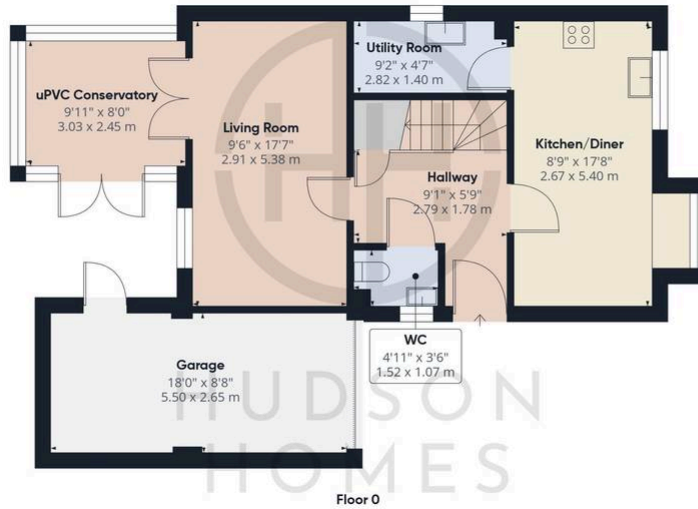


2 The Ashes, Peterborough

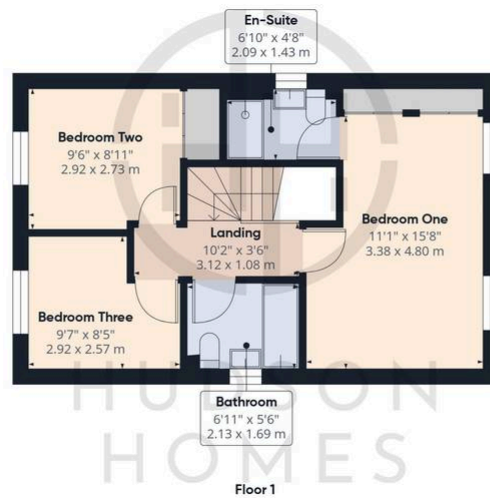
£325,000 Freehold

PRIVATE CUL-DE-SAC of 6 PROPERTIES • KITCHEN/DINING ROOM + UTILITY ROOM • uPVC CONSERVATORY •
THREE DOUBLE BEDROOMS - 2 with FITTED WARDROBES • CLOAKROOM/EN-SUITE/FAMILY BATHROOM •
ENCLOSED FRONT & REAR GARDENS • SINGLE GARAGE & DRIVEWAY PARKING • 2.5 MILES to TRAIN STATION &
CITY CENTRE • SHORT WALK to SHOPS & SCHOOLS • INTERNAL FLOOR AREA 1,012 sqft





Approximate total area⁽¹⁾
 1182 ft²
 109.7 m²



(1) Excluding balconies and terraces

Calculations reference the RICS IPMS 3C standard. Measurements are approximate and not to scale. This floor plan is intended for illustration only.

GIRAFFE360

Hudson Homes
 8 Crusader Court, Yaxley, PE7 3PU
 01733 788222