



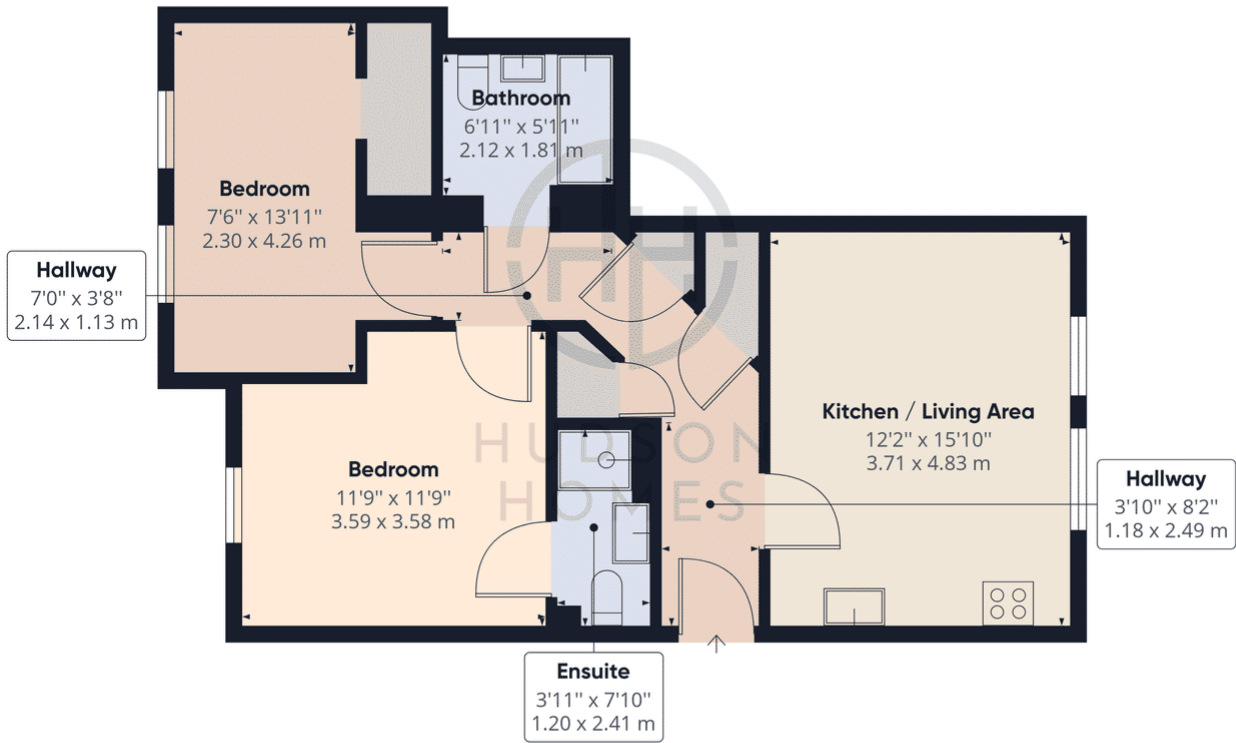
21 Central Court, North Street

£145,000 Leasehold

FIRST FLOOR FLAT - CITY CENTRE LOCATION • OPEN PLAN LIVING/KITCHEN/DINING • TWO DOUBLE BEDROOMS • BATHROOM & EN-SUITE • SECURE GATED PARKING SPACE • COUNCIL TAX BAND B £1700 PER YEAR • 250 YEAR LEASE STARTED in 2015 (240 years remaining) • GROUND RENT £300 PER ANNUM • SERVICE CHARGE £1317.92 PER YEAR + INSURANCE £243.21 • VERY CLOSE TO PETERBOROUGH TRAIN STATION



HUDSON
HOMES



Approximate total area⁽¹⁾
641.93 ft²
59.64 m²

(1) Excluding balconies and terraces

While every attempt has been made to ensure accuracy, all measurements are approximate, not to scale. This floor plan is for illustrative purposes only.

GIRAFFE360

You can include any text here. The text can be modified upon generating your brochure.