

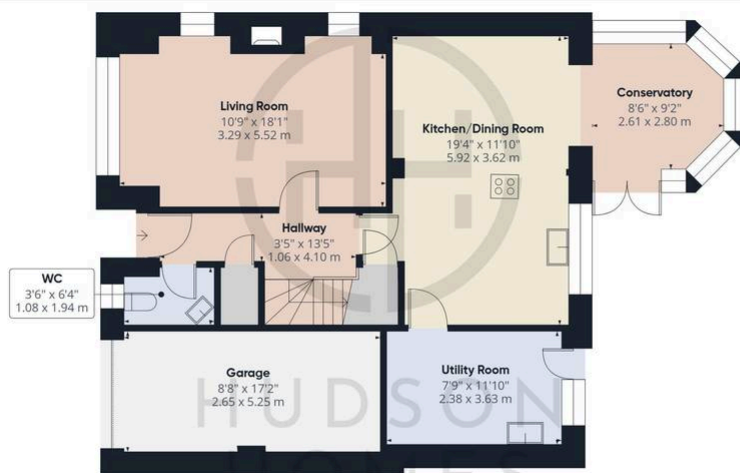


25 Norman Drive, Stilton

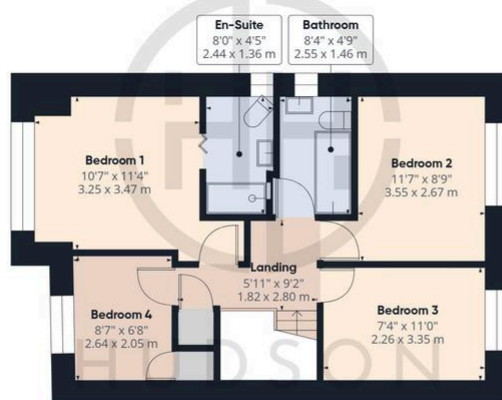
Offers In Excess Of £400,000 Freehold

WELL MAINTAINED THROUGHOUT - VIEWING IS A MUST! • LIVING ROOM with MULTI FUEL BURNER INSTALLED 2018 • CONSERVATORY WINDOWS, SKY LIGHT DOORS & WARM ROOF INSTALLED JUNE 2022 • UTILITY ROOM & CLOAKROOM • BEDROOM ONE with EN-SUITE • NEW WINDOWS, DOORS, FACIAS & GUTTERING INSTALLED MAY 2021 • GLOW WORM BOILER INSTALLED JAN 2021 SERVICED ANNUALLY • SINGLE GARAGE & DRIVEWAY PARKING • TOTAL FLOOR AREA 1,399 sqft • SHORT WALK TO SHOPS & ALL VILLAGE AMENITIES





Floor 0



Floor 1



Approximate total area⁽¹⁾
 1394 ft²
 129.4 m²

(1) Excluding balconies and terraces

Calculations reference the RICS IPMS 3C standard. Measurements are approximate and not to scale. This floor plan is intended for illustration only.

GIRAFFE360

Hudson Homes

8 Crusader Court, YAXLEY, PE7 3PU

01733 788222