

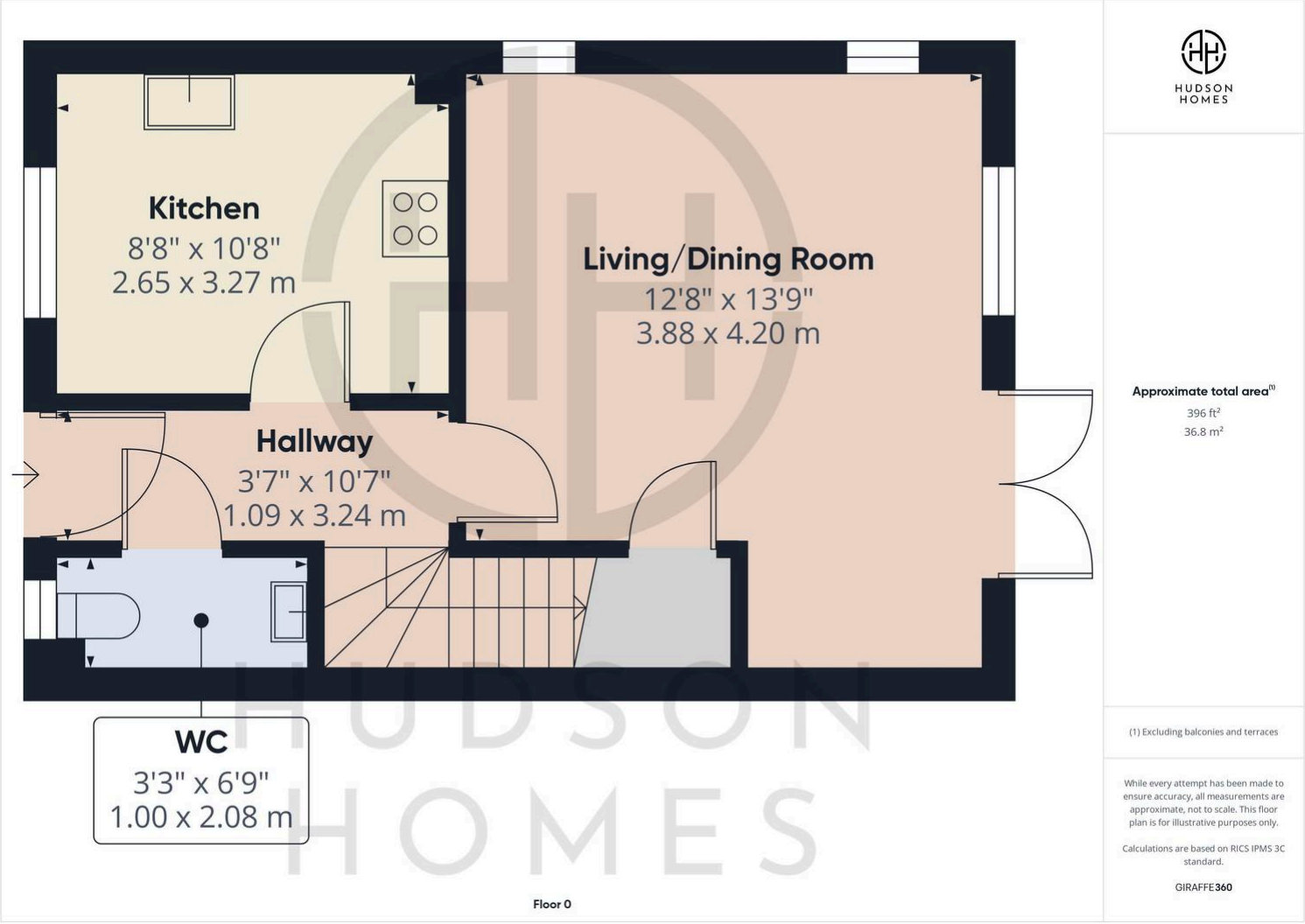
24 Violet Way, Yaxley

£250,000 Freehold

IDEAL FIRST TIME PURCHASE • KITCHEN WITH INTEGRATED APPLIANCES (LESS THAN 3 YEARS OLD) •
DOWNSTAIRS WC • SOUTH FACING REAR GARDEN • PRIVATELY OWNED SOLAR PANELS • EN-SUITE TO MASTER
• DRIVEWAY FOR TWO VEHICLES & SINGLE DETACHED GARAGE • COUNCIL TAX BAND B • INTERNAL FLOOR
AREA 743SQFT • CLOSE TO LOCAL SCHOOLS, AMENITIES & A1(M)



HUDSON
HOMES



You can include any text here. The text can be modified upon generating your brochure.