



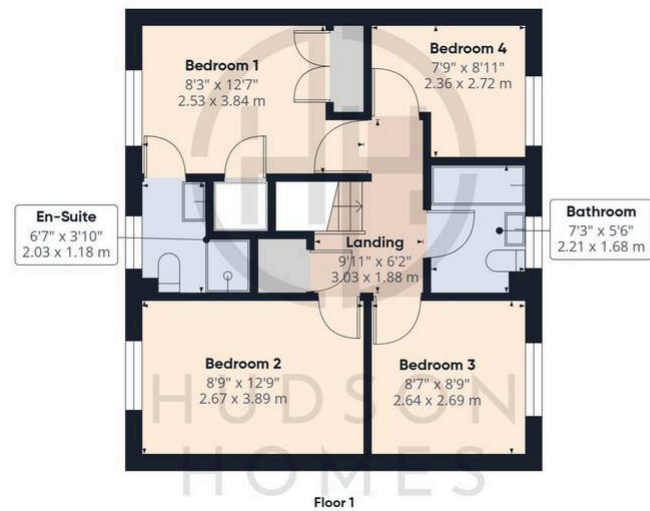
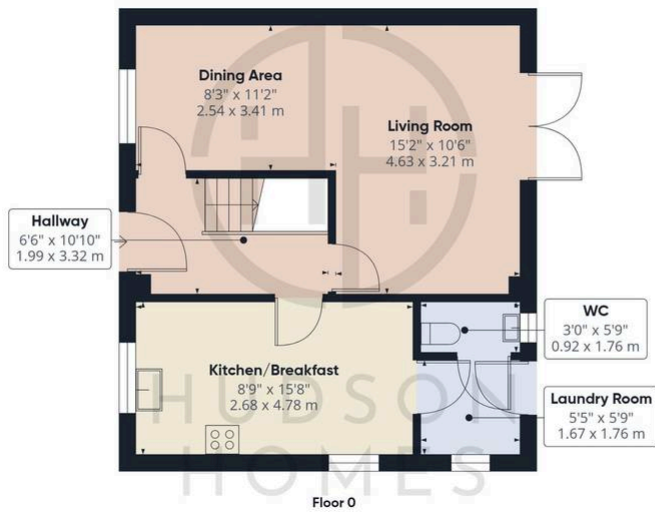
15 Millport Drive, Eye

£300,000 Freehold

KITCHEN/BREAKFAST ROOM • CLOAKROOM & LAUNDRY ROOM • L SHAPED LOUNGE/DINING ROOM •
 BEDROOM ONE with EN-SUITE & FITTED WARDROBES • LARGE ENCLOSED GARDEN with RAISED DECK AREA •
 DRIVEWAY PARKING for TWO VEHICLES & PARKING BAYS • INTERNAL FLOOR AREA 1,066 sqft • CATCHMENT FOR
 ARTHUR MELLOWS VILLAGE COLLEGE • 5.8 MILES TO THE TRAIN STATION & CITY CENTRES • SHORT WALK TO
 SHOPS, RESTAURANTS & AMENITIES



HUDSON
HOMES



Approximate total area⁽¹⁾
990 ft²
92 m²

(1) Excluding balconies and terraces

Calculations reference the RICS IPMS 3C standard. Measurements are approximate and not to scale. This floor plan is intended for illustration only.

GIRAFFE360

You can include any text here. The text can be modified upon generating your brochure.