



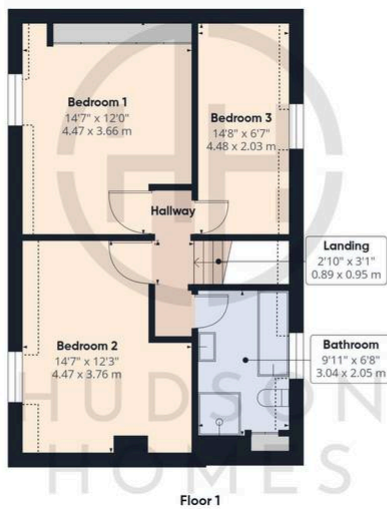
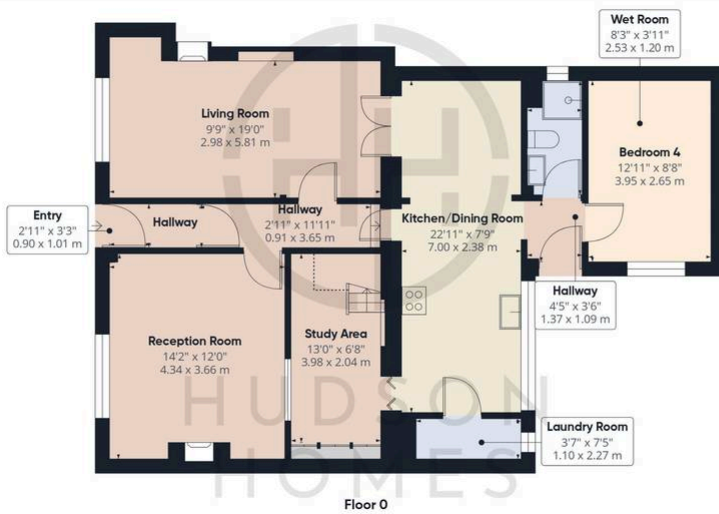
82 Main Street, Yaxley

£335,000 Freehold

CHARMING 1830's CHARACTER COTTAGE • OWNED BY THE SAME FAMILY FOR OVER 40 YEARS • THREE RECEPTION ROOMS & STUDY AREA • DOWNSTAIRS DOUBLE BEDROOM & WET ROOM • REFITTED 4 PIECE BATHROOM SUITE • A-RATED WORCESTER BOSCH COMBI BOILER SERVICED ANNUALLY • COTTAGE GARDEN WITH SUMMER HOUSE & BRICK BUILT SHEDS • ON STREET PARKING AT THE FRONT OF THE PROPERTY • INTERNAL FLOOR AREA 1,442 sqft • LOCATED IN THE HEART OF YAXLEY VILLAGE



HUDSON
HOMES



Approximate total area⁽¹⁾

1419 ft²
131.7 m²

Reduced headroom

50 ft²
4.6 m²

(1) Excluding balconies and terraces

Reduced headroom

..... Below 5 ft/1.5 m

Calculations reference the RICS IPMS 3C standard. Measurements are approximate and not to scale. This floor plan is intended for illustration only.

GIRAFFE360

01733 788222

info@hudson-homes.co.uk

8 Crusader court

PE7 3PU