

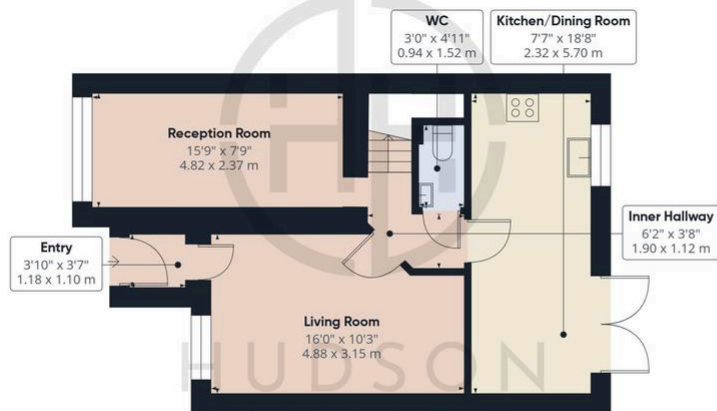


18 Ash Close, Yaxley

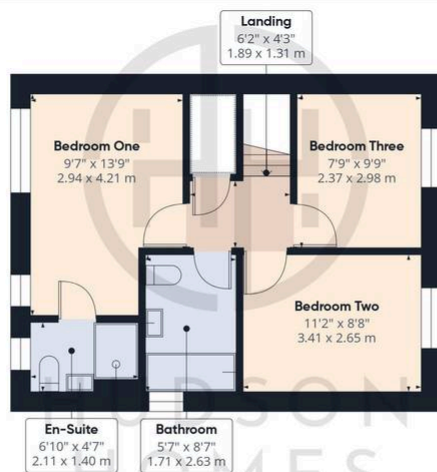
£275,000 Freehold

WELL MAINTAINED THROUGHOUT • SITUATED at the BOTTOM of a QUIET CUL-DE-SAC • KITCHEN/DINING ROOM with FRENCH DOORS onto a DECK • GARAGE CONVERSION into a RECEPTION ROOM • TWO PARKING SPACES to the FRONT • EN-SUITE to BEDROOM ONE • FAMILY BATHROOM & DOWNSTAIRS CLOAKROOM • INTERNAL FLOOR AREA 872 sqft • COUNCIL TAX BAND C £2169 PER YEAR • SHORT WALK to SHOPS, SCHOOLS & ALL AMENITIES





Floor 0



Floor 1



Approximate total area⁽¹⁾

912 ft²

84.8 m²

(1) Excluding balconies and terraces

Calculations reference the RICS IPMS 3C standard. Measurements are approximate and not to scale. This floor plan is intended for illustration only.

GIRAFFE360

Hudson Homes

8 Crusader Court, Yaxley, PE7 3PU

01733 788222