



1a Halcyon Drive, Whittlesey
Peterborough



£550,000



1a Halcyon Drive

Whittlesey, Peterborough

Presenting this exquisite 4-bedroom detached house, a modern marvel, expertly crafted in 2021 by a local builder. Stepping inside, prepare to be captivated by the spacious 28ft living room adorned with bi-fold doors that allow natural light to cascade through the room, creating a serene and inviting ambience.

Designed with practicality in mind, this property boasts a utility room featuring a side door for convenience and direct access to the garage, ensuring seamless functionality in daily tasks. The comfort of underfloor heating on the ground floor adds a touch of luxury to every-day living.

Convenience is key with a downstairs shower room and a family bathroom, catering to the needs of a bustling household effortlessly. The master bedroom, a sanctuary in itself, features fitted wardrobes, walk-in wardrobes, and an en-suite bathroom, offering a private retreat within the confines of your own home.

Bedrooms two and three are equally luxurious, each equipped with their own en-suites, providing privacy and comfort for all residents. The open-plan kitchen/dining/living area is a harmonious space where cooking, dining, and relaxing blend seamlessly together, making it the heart of the home.

Flowing from the interior, discover a fully enclosed L-shaped garden, a tranquil outdoor oasis perfect for relaxing under the sun or entertaining guests in a private setting. Truly a space to unwind and savour the beauty of nature right at your doorstep.







Floor 0

Approximate total area⁽¹⁾

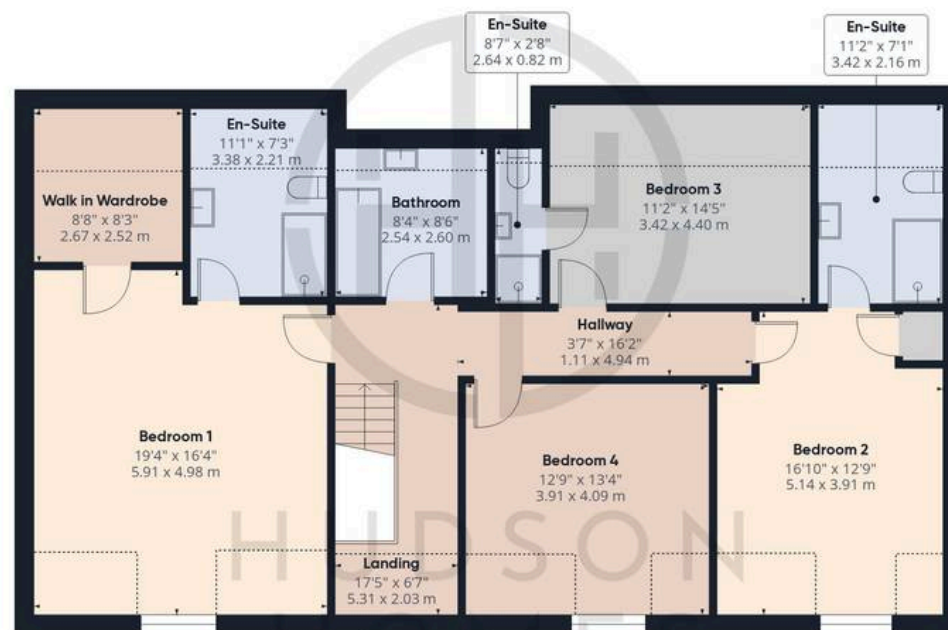
2691 ft²

250 m²

Reduced headroom

253 ft²

23.5 m²



Floor 1

(1) Excluding balconies and terraces

Reduced headroom

Below 5 ft/1.5 m

While every attempt has been made to ensure accuracy, all measurements are approximate, not to scale. This floor plan is for illustrative purposes only.

Calculations are based on RICS IPMS 3C standard.

GIRAFFE360



Hudson Homes Estate Agents

8 Crusader Court, Yaxley - PE7 3PU

01733 788222

info@hudson-homes.co.uk

www.hudson-homes.co.uk/

