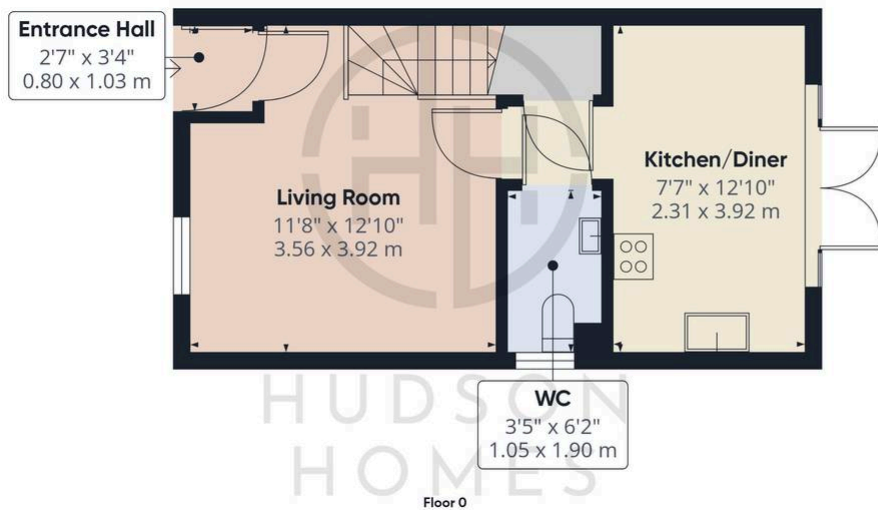


5 Fonthill Close, Hampton Water

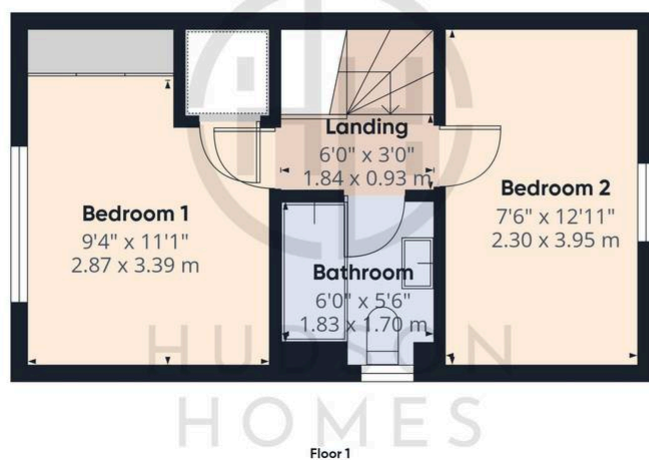
£250,000 Freehold

IDEAL FIRST TIME PURCHASE • IMMACULATLY PRESENTED TWO DOUBLE BEDROOM PROPERTY • IMPROVED KITCHEN WITH INTEGRATED APPLIANCES INCLUDING A WATER SOFTENER SYSTEM • DOWNSTAIRS WC • DRIVEWAY FOR THREE VEHICLES • BEAUTIFULLY LANDSCAPED REAR GARDEN • INTERNAL FLOOR AREA 563 SQFT • COUNCIL TAX BAND B • CLOSEBY TO SERPENTINE GREEN & SCHOOLS • FANTASTIC ACCESS TO THOSE TRAVELLING ALONG THE A1





Approximate total area⁽¹⁾
563 ft²
52.3 m²



(1) Excluding balconies and terraces

While every attempt has been made to ensure accuracy, all measurements are approximate, not to scale. This floor plan is for illustrative purposes only.

Calculations are based on RICS IPMS 3C standard.

GIRAFFE360

Hudson Homes
8 Crusader Court, Yaxley, PE7 3PU
01733 788 222