

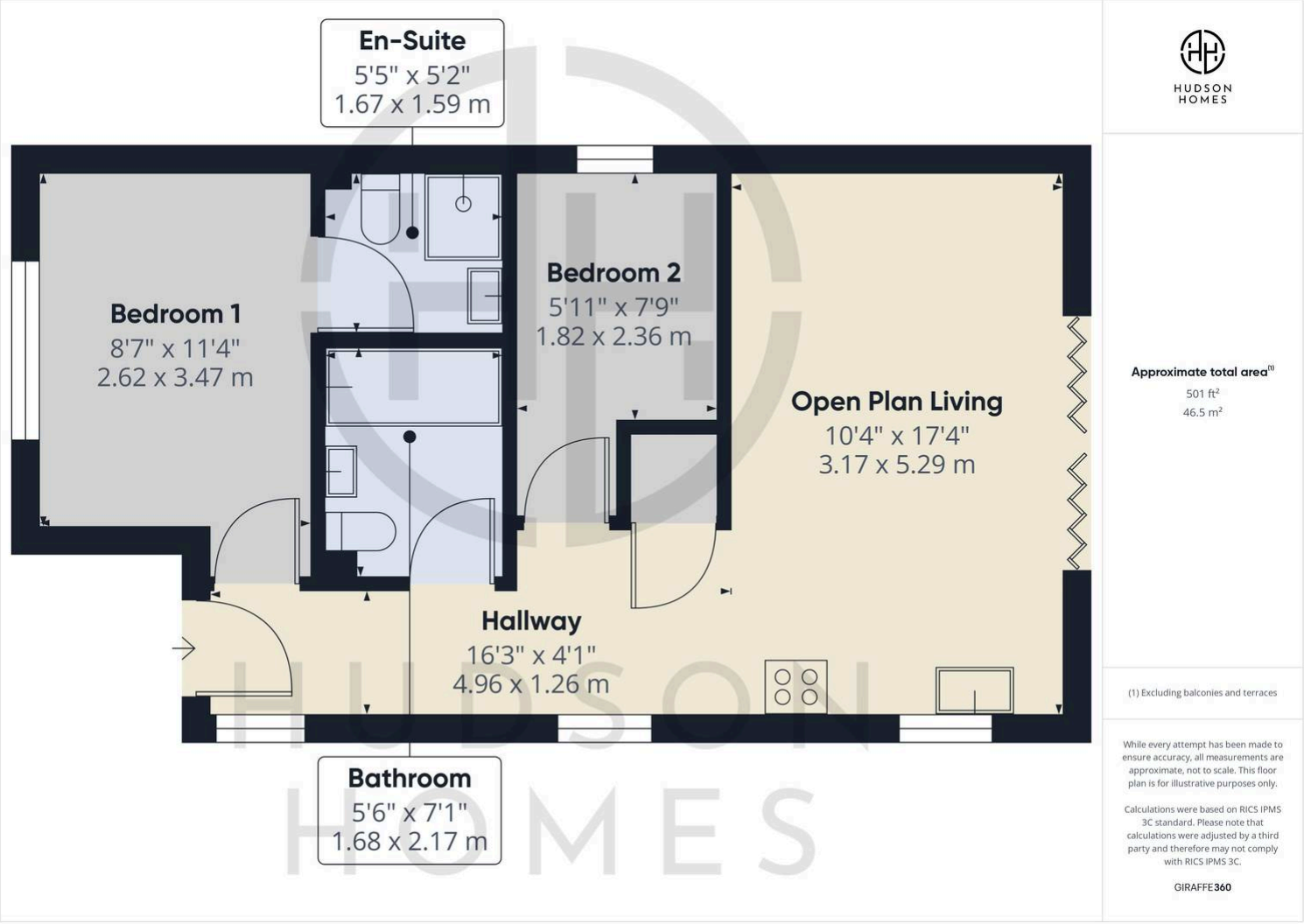
8a, Cherrytree Walk, Yaxley

£280,000 Freehold

NO FORWARD CHAIN • OPEN PLAN LIVING WITH VAULTED CEILINGS • INTEGRATED KITCHEN WITH STONE WORKTOPS • BATHROOM & EN-SUITE SHOWER ROOM • BIFOLDING DOORS ONTO A RAISED DECK • UNDERFLOOR HEATING • LOW MAINTENANCE GARDENS • DRIVEWAY PARKING FOR 2 VEHICLES • SHORT WALK TO SHOPS & AMENITIES • 10 YEAR PREMIER STRUCTURAL WARRANTY



HUDSON
HOMES



You can include any text here. The text can be modified upon generating your brochure.