



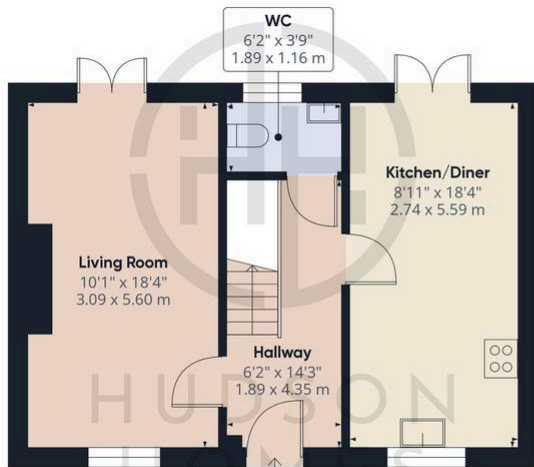
33 Tilman Drive, Peterborough

£300,000 Freehold

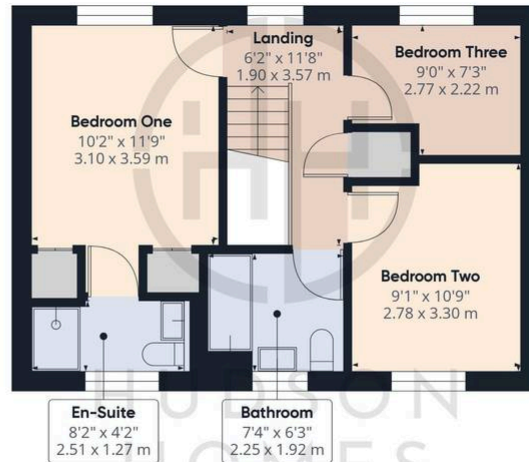
LIVING ROOM with MEDIA WALL & FRENCH DOORS to GARDEN • KITCHEN/DINER with FRENCH DOORS to GARDEN • EN-SUITE & HIS & HER CUPBOARDS to BEDROOM ONE • FAMILY BATHROOM & DOWNSTAIRS CLOAKROOM • SINGLE GARAGE & DRIVEWAY PARKING FOR 3 VEHICLES • LANDSCAPED GARDEN with PATIO AREA & ARTIFICIAL LAWN • INTERNAL FLOOR AREA 990 sqft • 2.4 MILES TO THE TRAIN STATION & CITY CENTRE
• A SHORT WALK to SHOPS & SCHOOLS • COUNCIL TAX BAND C £1943 PER YEAR



HUDSON
HOMES



Floor 0 Building 1



Floor 1 Building 1



Floor 0 Building 2



Approximate total area⁽¹⁾
1072.51 ft²
99.64 m²

(1) Excluding balconies and terraces

While every attempt has been made to ensure accuracy, all measurements are approximate, not to scale. This floor plan is for illustrative purposes only.

Calculations are based on RICS IPMS 3C standard.

GIRAFFE360

01733 788222

info@hudson-homes.co.uk

8 Crusader court

PE7 3PU