

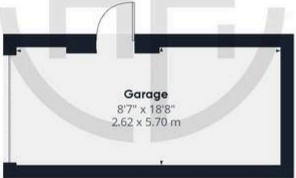
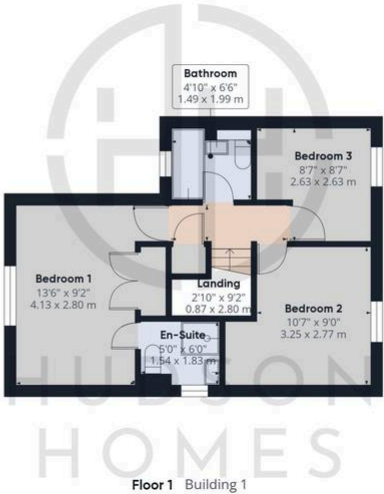


## 24 Saunders Close, Peterborough

£335,000 Freehold

NO FORWARD CHAIN • THREE BEDROOM FAMILY HOME • TOTAL FLOOR AREA 1033sqft • SPACIOUS KITCHEN/DINER • UTILITY & CONSERVATORY • EN-SUITE TO MASTER • DRIVEWAY & GARAGE • GOOD SIZE REAR GARDEN • COUNCIL TAX BAND C • FANTASTIC ACCESS FOR THE A1 & THE CITY CENTRE • CLOSE TO LOCAL AMENITIES





**Approximate total area<sup>(1)</sup>**  
1191.99 ft<sup>2</sup>  
110.74 m<sup>2</sup>

(1) Excluding balconies and terraces

While every attempt has been made to ensure accuracy, all measurements are approximate, not to scale. This floor plan is for illustrative purposes only.  
Calculations are based on RICS IPMS 3C standard.

GIRAFFE360

You can include any text here. The text can be modified upon generating your brochure.