

29 Daimler Avenue, Yaxley

£425,000 Freehold

DETACHED FOUR BEDROOM FAMILY HOME • SET WITHIN A PRIVATE ROAD ON A POPULAR ESTATE • CLOSE TO LOCAL AMENITIES & SCHOOL • TWO RECEPTION ROOMS • KITCHEN/DINER & UTILITY • RE-FITTED EN-SUITE TO MASTER • TOTAL FLOOR AREA 1430SQFT • COUNCIL TAX BAND E • DRIVEWAY & DOUBLE GARAGE • SOUTH FACING LANDSCAPED GARDEN WITH A PURPOSE BUILT PERGOLA



HUDSON
HOMES



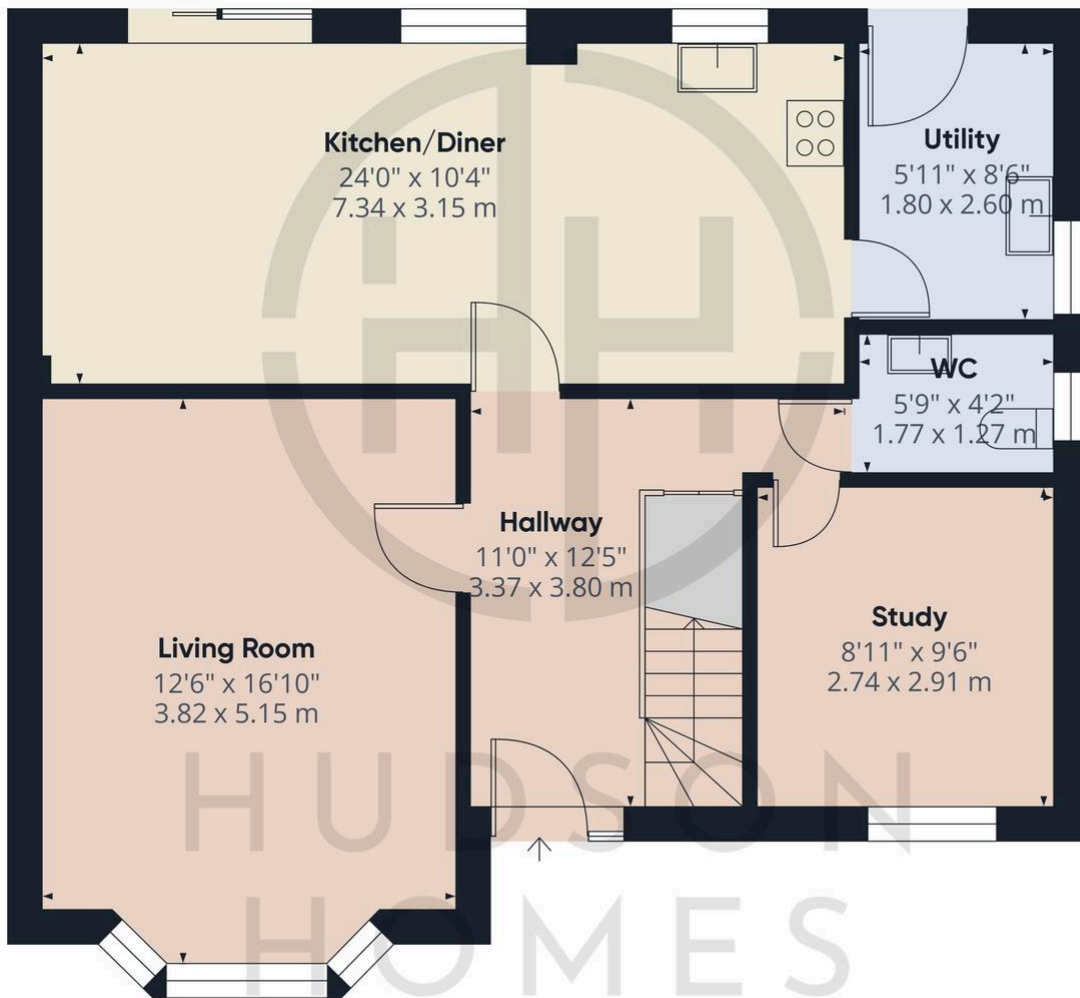
Approximate total area⁽¹⁾
735.4 ft²
68.32 m²

(1) Excluding balconies and terraces

While every attempt has been made to ensure accuracy, all measurements are approximate, not to scale. This floor plan is for illustrative purposes only.

Calculations are based on RICS IPMS 3C standard.

GIRAFFE360



Floor 0

01733 788222

info@hudson-homes.co.uk

8 Crusader Court

PE7 3PU