



48 Church Street, Werrington
Peterborough



£350,000



48 Church Street

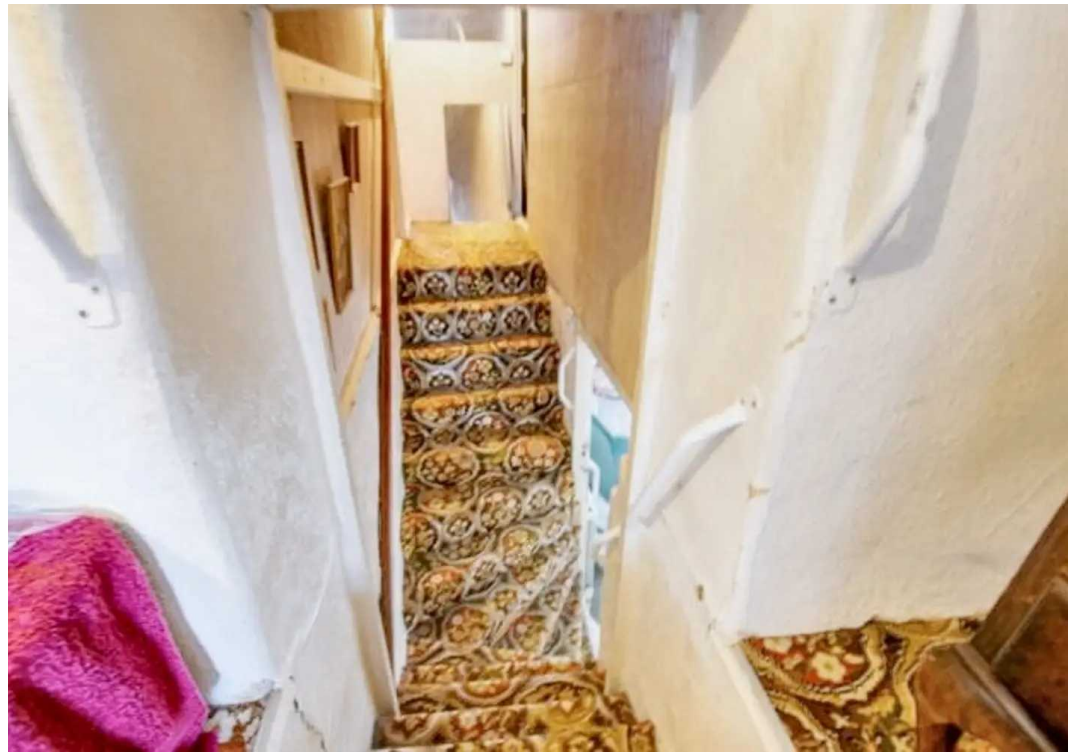
Werrington, Peterborough

Magnificently nestled in the heart of a picturesque village, this 18th-century Grade II listed cottage boasts an abundance of history and charm that is sure to captivate admirers of period properties. Steeped in character, this 3-bedroom residence represents a rare opportunity to own a piece of history and to breathe new life into a home rich in heritage.

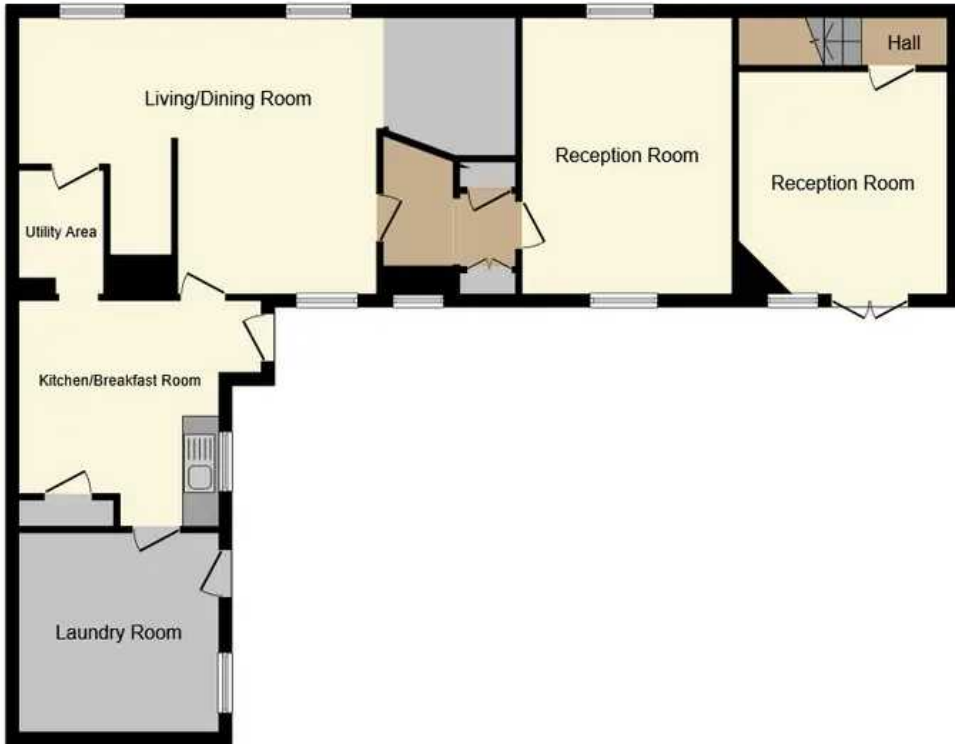
Upon entering, one is instantly struck by the timeless elegance and unique architectural features that define this property. The inglenook fireplace complete with a traditional oven stands as a testament to the craftsmanship of a bygone era, while original beams add a rustic appeal that speaks to the cottage's storied past. With a total floor area of 156 square metres, there is ample scope to reimagine and revitalise the living spaces, allowing one to create a bespoke interior that harmonises seamlessly with the property's historic fabric.

Although in need of full refurbishment, the cottage benefits from gas central heating, offering modern comfort alongside its period charm. The allure of the property extends beyond its walls, as it enjoys a desirable south-facing walled garden (which needs landscaping) that will serve as a private sanctuary, ideal for moments of relaxation and contemplation.

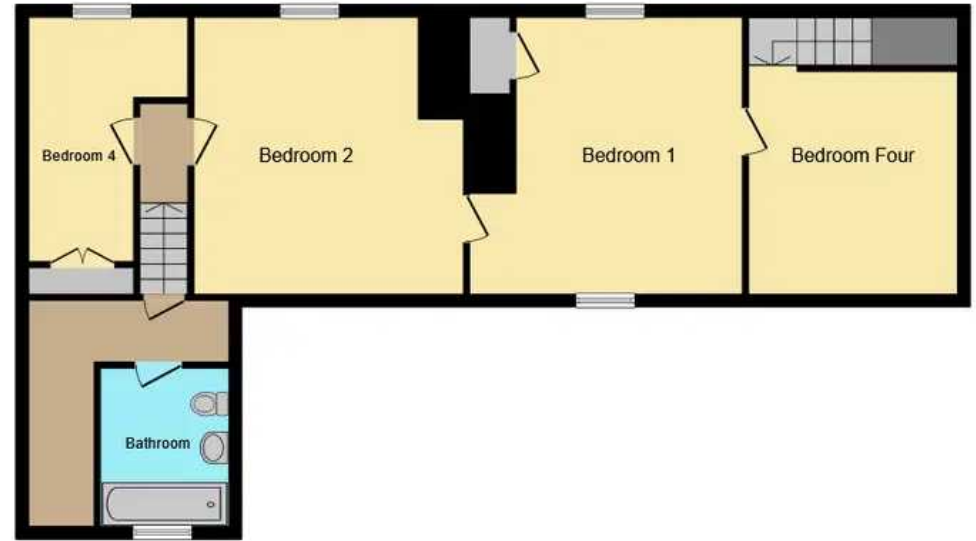
Situated in a sought-after village location, this cottage overlooks the historic church, providing a constant reminder of the heritage and tradition that permeate the local community. The setting is peaceful and idyllic, offering residents a tranquil escape from the hustle and bustle of every-day life while fostering a strong sense of community spirit.







Ground Floor



First Floor



Hudson Homes Estate Agents

122a Main Street, Yaxley - PE7 3LP

01733 788222

info@hudson-homes.co.uk

www.hudson-homes.co.uk/

