



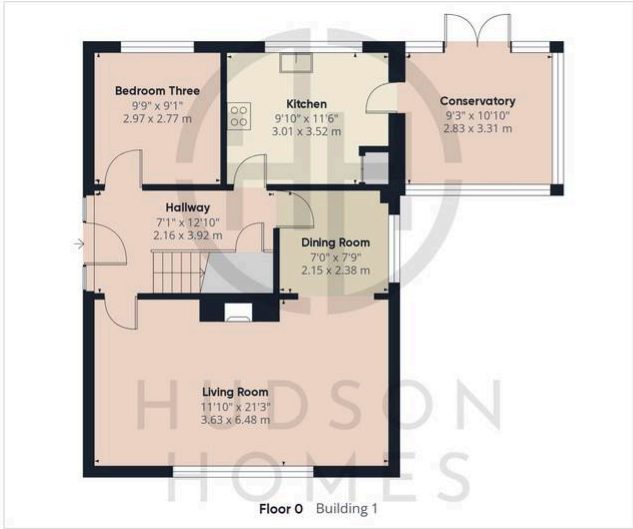
6 Beauvale Gardens, Peterborough

£280,000 Freehold

RARELY AVAILABLE & LOCATED ON A TREE LINED STREET • NO FORWARD CHAIN • TWO UPSTAIRS BEDROOMS & ONE GROUND FLOOR BEDROOM • 21ft LOUNGE WITH OPEN PLAN DINING AREA • uPVC CONSERVATORY • IDEAL BOILER FITTED SEPTEMBER 2021 (SERVICED ANNUALLY) • LEASED SOLAR PANELS • SINGLE GARAGE & DRIVEWAY PARKING FOR 2/3 VEHICLES • BUILT IN THE 1960'S BY SHELTON'S BUILDERS • SITUATED ON A



HUDSON
HOMES



Approximate total area⁽¹⁾
1222.77 ft²
113.6 m²

(1) Excluding balconies and terraces

While every attempt has been made to ensure accuracy, all measurements are approximate, not to scale. This floor plan is for illustrative purposes only.

Calculations were based on RICS IPMS 3C standard. Please note that calculations were adjusted by a third party and therefore may not comply with RICS IPMS 3C.

GIRAFFE360

You can include any text here. The text can be modified upon generating your brochure.