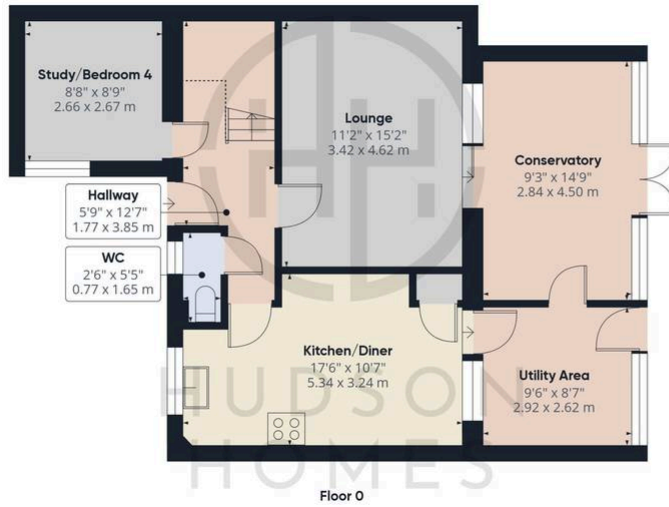


4 Brynmore, Bretton

£210,000 Freehold

NO FORWARD CHAIN • COMMUNAL PARKING TO THE FRONT OF THE PROPERTY • REFITTED KITCHEN/DINER • 3-4 BEDROOMS OR 2-3 RECEPTION ROOMS • BATHROOM & DOWNSTAIRS CLOAKROOM • COUNCIL TAX BAND A £1388 PER YEAR • uPVC CONSERVATORY • IDEAL 1st TIME BUY OR INVESTMENT BUY • CLOSE TO PETERBOROUGH CITY HOSPITAL • ON A BUS ROUTE & EASY ACCESS TO ALL ROAD NETWORKS





Approximate total area⁽¹⁾
1140.86 ft²
105.99 m²

Reduced headroom
31.17 ft²
2.9 m²

(1) Excluding balconies and terraces

Reduced headroom
..... Below 5 ft/1.5 m

While every attempt has been made to ensure accuracy, all measurements are approximate, not to scale. This floor plan is for illustrative purposes only.

Calculations were based on RICS IPMS 3C standard. Please note that calculations were adjusted by a third party and therefore may not comply with RICS IPMS 3C.

GIRAFFE360



01733 788222

info@hudson-homes.co.uk

8 Crusader court

PE7 3PU