



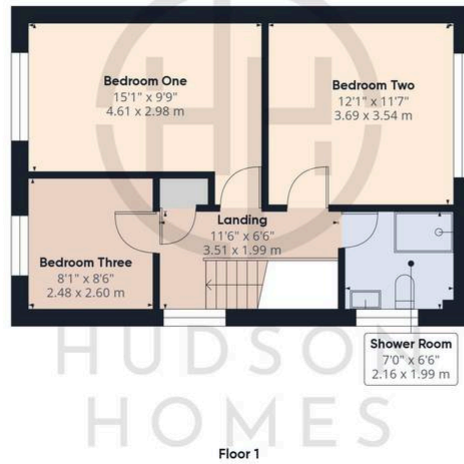
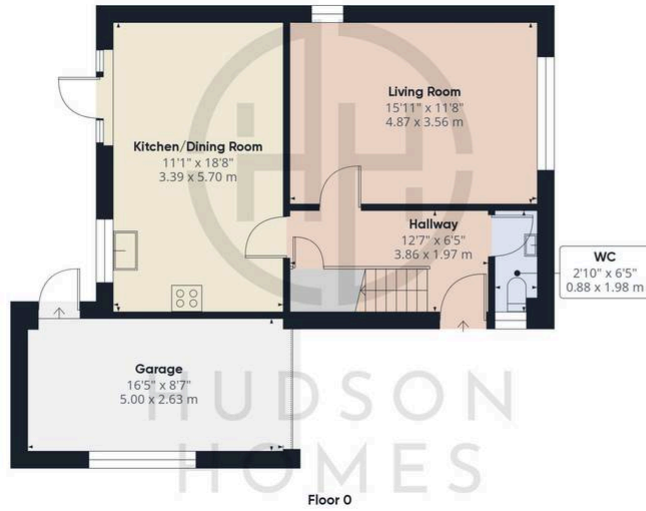
20 Field Rise, Yaxley

Freehold

NO FORWARD CHAIN • SINGLE GARAGE & DRIVEWAY PARKING for 3 VEHICLES • REFITTED INTEGRATED KITCHEN & DINING ROOM (2023) • REPLACEMENT WORCESTER BOILER (2023) • SHOWER ROOM • THREE DOUBLE BEDROOMS • INTERNAL FLOOR AREA 1115.69 sqft • QUIET CUL-DE-SAC LOCATION • EASY ACCESS TO THE A1(M) & A605 • SHORT WALK TO SHOPS, SCHOOLS & ALL VILLAGE AMENITIES



HUDSON
HOMES



Approximate total area⁽¹⁾
1115.69 ft²
103.65 m²

(1) Excluding balconies and terraces

While every attempt has been made to ensure accuracy, all measurements are approximate, not to scale. This floor plan is for illustrative purposes only.

Calculations were based on RICS IPMS 3C standard. Please note that calculations were adjusted by a third party and therefore may not comply with RICS IPMS 3C.

GIRAFFE360

You can include any text here. The text can be modified upon generating your brochure.