

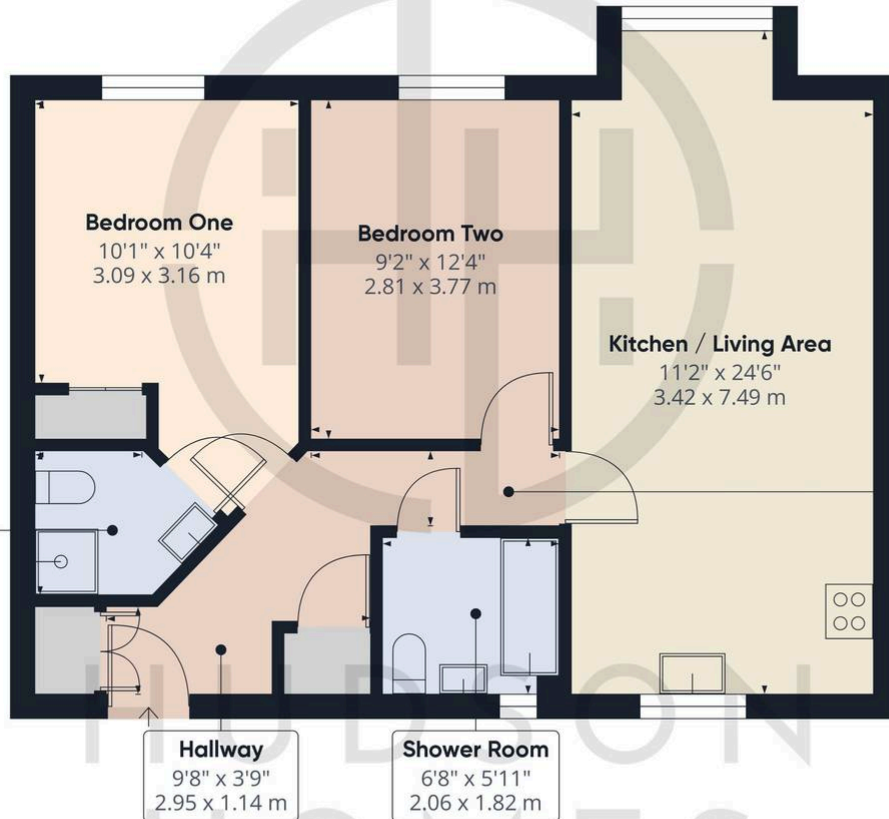


49 Violet Way, Yaxley

£160,000 Leasehold

2nd FLOOR FLAT with TWO DOUBLE BEDROOMS • REFITTED SHOWER ROOM & EN-SUITE TO BEDROOM ONE • OPEN PLAN KITCHEN/LIVING/DINING • LVT FLOORING FITTED IN HALLWAY, BEDROOM TWO & KITCHEN/LIVING AREA • NEW SPOTLIGHTS FITTED THROUGHOUT • ONE ALLOCATED PARKING SPACE + VISITORS PARKING • COUNCIL TAX BAND A £1548 PER YEAR • GROUND RENT £250 PER YEAR • SERVICE CHARGE PER MONTH • YEARS REMAINING ON THE LEASE





Approximate total area⁽¹⁾
682.09 ft²
63.37 m²

(1) Excluding balconies and terraces

While every attempt has been made to ensure accuracy, all measurements are approximate, not to scale. This floor plan is for illustrative purposes only.

Calculations were based on RICS IPMS 3C standard. Please note that calculations were adjusted by a third party and therefore may not comply with RICS IPMS 3C.

GIRAFFE360

01733 788222

info@hudson-homes.co.uk

8 Crusader Court

PE7 3PU