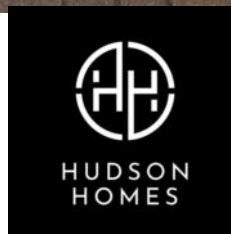




1 Foren Crescent, Godmanchester
Huntingdon



£515,000



1 Foren Crescent

Godmanchester, Huntingdon

Fresh to the market with NO FORWARD CHAIN, this impressive BRAND NEW 4 Bedroom Detached House was once the EX SHOW HOME and is ready for its next owners to make it their own. Step inside and be greeted by a spacious layout that includes THREE RECEPTION ROOMS, perfect for entertaining or simply relaxing with the family. The KITCHEN/BREAKFAST/UTILITY area is a highlight, featuring French doors that open up to the garden, bringing the outdoors in. Upstairs, you'll find BEDROOM ONE with its own DRESSING ROOM & EN-SUITE SHOWER ROOM, while BEDROOMS TWO & THREE boast FITTED WARDROBES. The family bathroom and cloakroom provide convenience for busy households. The single garage and driveway parking for 2 vehicles add to the practicality of this home. With an internal floor area of 139 square metres and an energy rating of B, this property ticks all the right boxes.

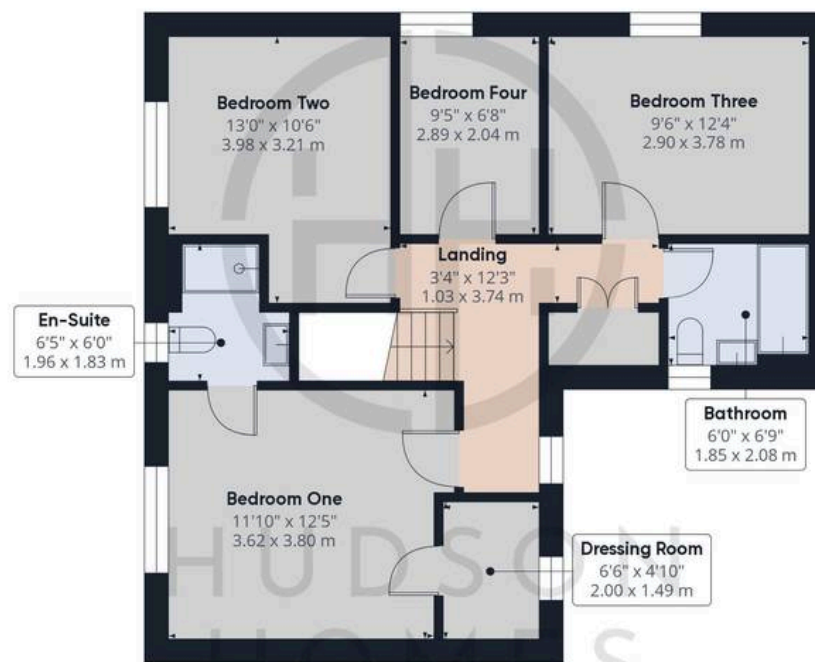
Outside, the property is surrounded by a sturdy brick wall, offering a sense of privacy and security. The well-maintained lawn is perfect for outdoor activities, with a designated patio area for alfresco dining or simply soaking up the sun. Need to access the driveway? A convenient side access gate makes it a breeze. The detached single garage is a valuable addition, measuring 3.30 x 6.19 metres and featuring an up and over door for easy access. Storage space in the roof area is handy for keeping things organised. With driveway parking for two vehicles, you'll never have to worry about finding a spot. Don't miss







Floor 0 Building 1



Floor 1 Building 1



Floor 0 Building 2



Approximate total area⁽¹⁾

1572.51 ft²
146.09 m²

Reduced headroom

13.25 ft²
1.23 m²

(1) Excluding balconies and terraces

Reduced headroom

..... Below 5 ft/1.5 m

While every attempt has been made to ensure accuracy, all measurements are approximate, not to scale. This floor plan is for illustrative purposes only.

Calculations were based on RICS IPMS 3C standard. Please note that calculations were adjusted by a third party and therefore may not comply with RICS IPMS 3C.

GIRAFFE360



Hudson Homes Estate Agents

8 Crusader Court, Yaxley - PE7 3PU

01733 788222

info@hudson-homes.co.uk

www.hudson-homes.co.uk/

