



14 Marconi Drive, Yaxley
Peterborough



£360,000



14 Marconi Drive

Yaxley, Peterborough

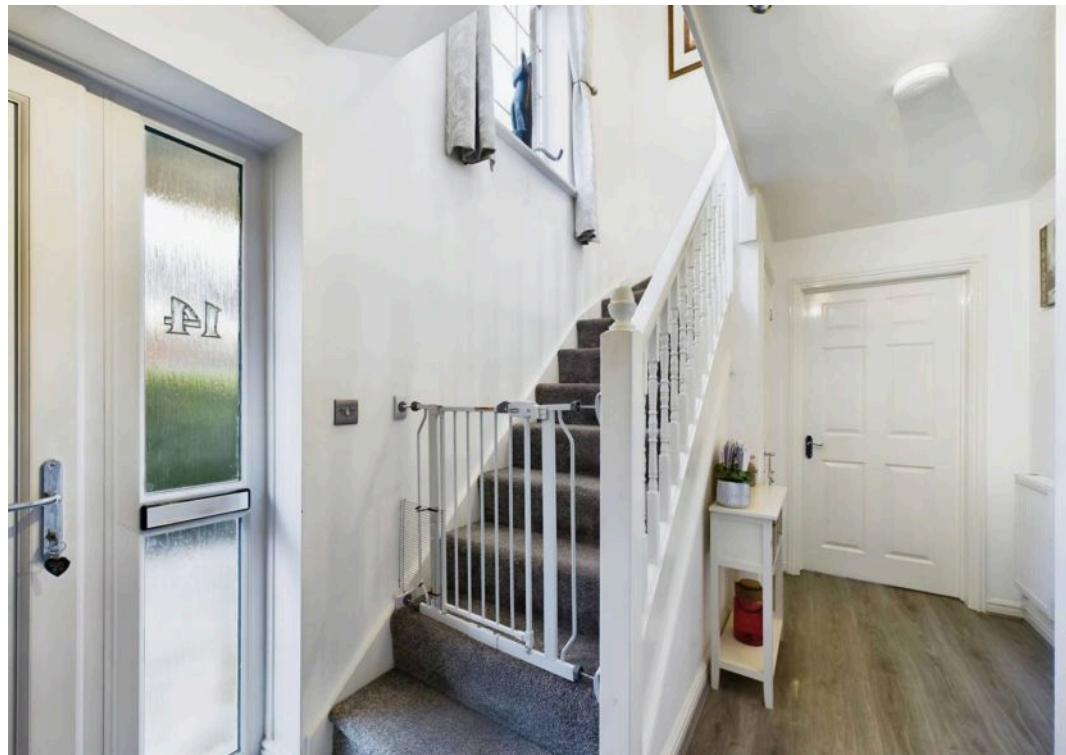
Welcome to this fantastic 4-bedroom detached house that feels like home the moment you step inside. The heart of the house is the fitted kitchen/breakfast room that boasts underfloor heating, perfect for those chilly mornings. The Hive system and Glow Worm boiler, meticulously serviced annually by British Gas, ensure your comfort all year round. Stay cosy during the colder months with the new real flame gas fire installed in 2021, creating a warm and inviting ambience for those movie nights in.

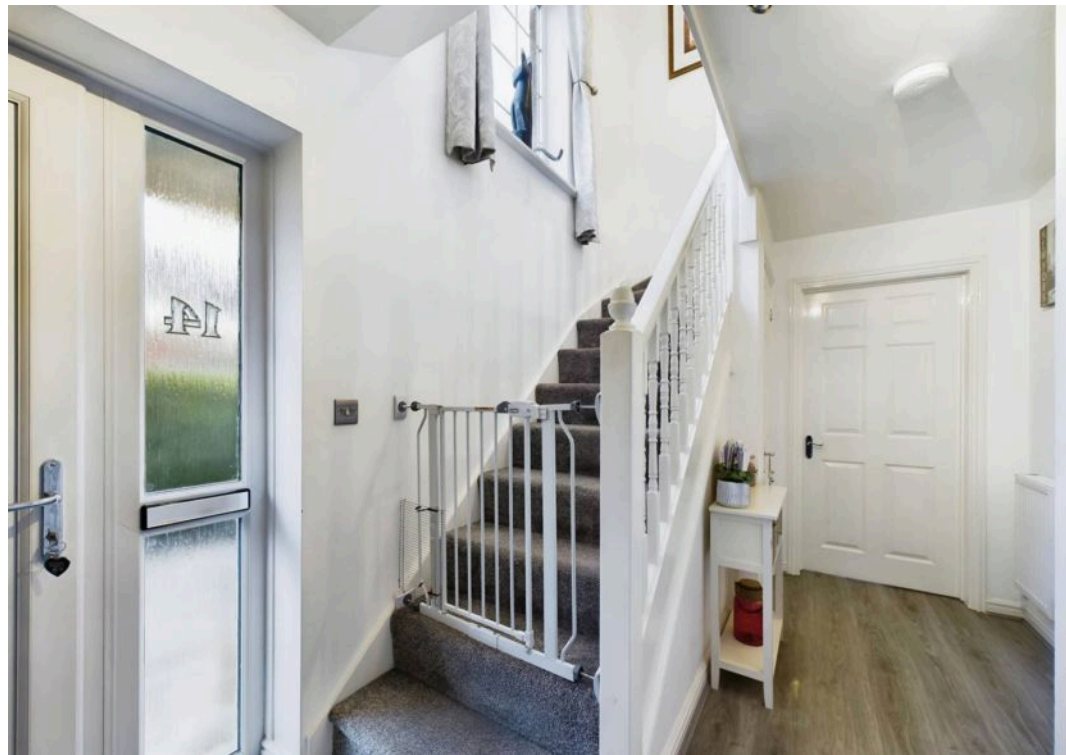
For those peaceful mornings or evening wind-downs, the uPVC conservatory is a wonderful spot to relax and enjoy the views. Need a quiet space to work or an extra bedroom? The study can easily be transformed into a fifth bedroom, offering you flexibility and space. With a cloakroom, en-suite, and bathroom, there's never a queue for the facilities.

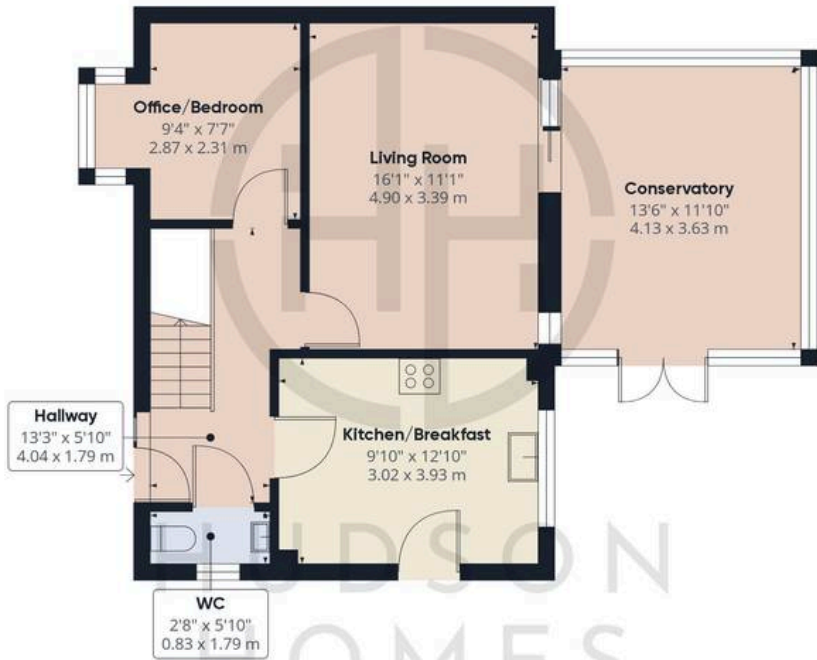
Eco-conscious? You'll appreciate the electric car charger point, offering convenience for your green lifestyle. The single garage and driveway provide parking for two vehicles, making coming home a breeze.

Spanning an internal floor area of 1165.09 sqft, this property offers plenty of room to stretch out and make memories. Located just a short walk from shops and Fourfields School, convenience is at your fingertips, making errands and school runs a walk in the park.

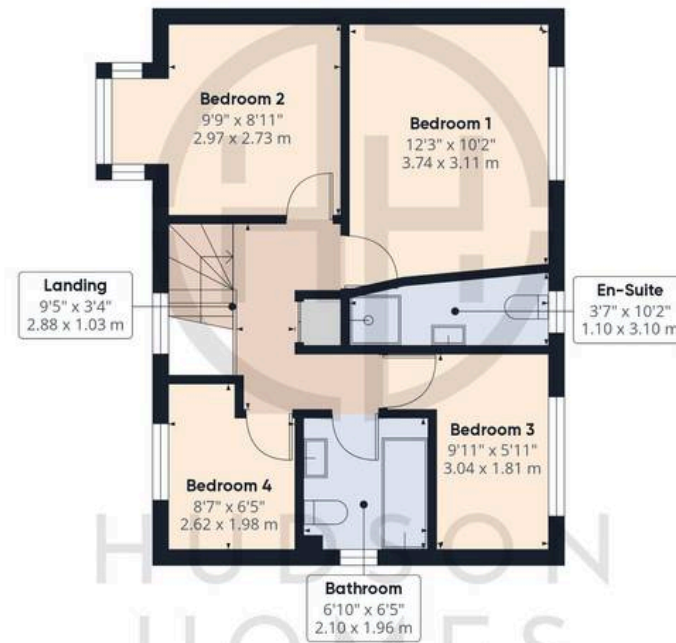
This fantastic property offers a perfect blend of modern amenities and a warm, inviting atmosphere. It's the ideal home for those who value comfort, convenience, and a touch of traditional charm. Don't miss out on this opportunity to own a beautiful property in a sought-after location. Contact us today to arrange a viewing.



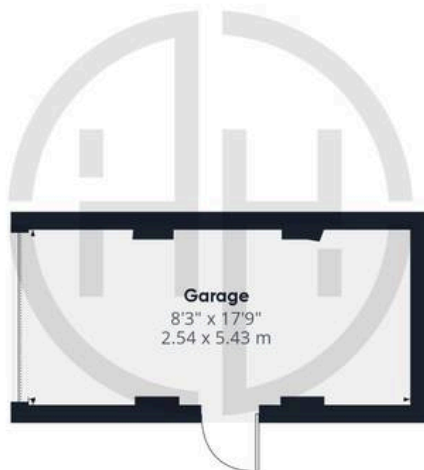




Floor 0 Building 1



Floor 1 Building 1



Floor 0 Building 2

Approximate total area⁽¹⁾

1310.73 ft²

121.77 m²

(1) Excluding balconies and terraces

While every attempt has been made to ensure accuracy, all measurements are approximate, not to scale. This floor plan is for illustrative purposes only.

Calculations were based on RICS IPMS 3C standard. Please note that calculations were adjusted by a third party and therefore may not comply with RICS IPMS 3C.

GIRAFFE 360



Hudson Homes Estate Agents

8 Crusader Court, Yaxley - PE7 3PU

01733 788222

info@hudson-homes.co.uk

www.hudson-homes.co.uk/

