



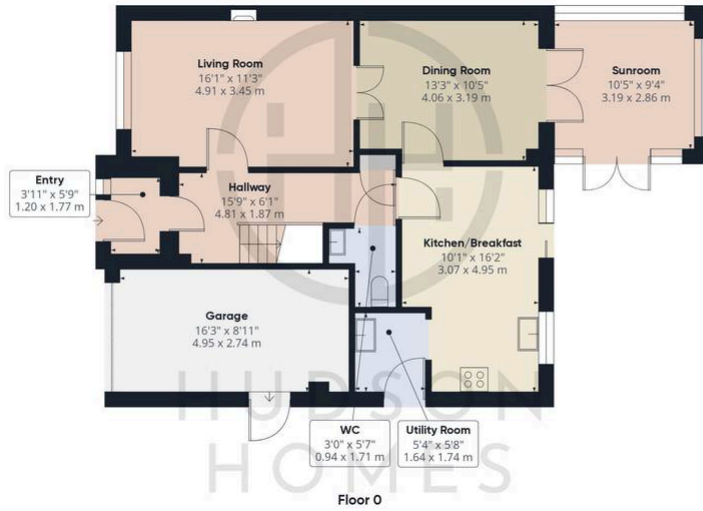
1 Tern Road, Hampton Hargate

£415,000 Freehold

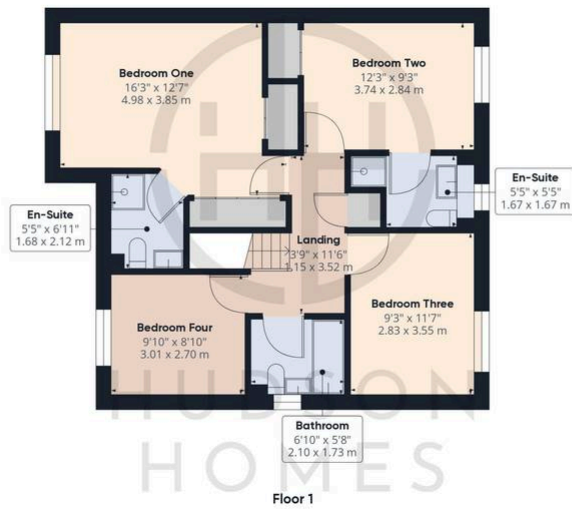
TOTAL FLOOR AREA 129 SQUARE METRES • UTILITY ROOM & CLOAKROOM • SUNROOM EXTENSION TO THE REAR ASPECT • TWO EN-SUITES & FAMILY BATHROOM • SINGLE GARAGE & DRIVEWAY PARKING • COUNCIL TAX BAND E = £2400pa • 4.6 MILES FROM THE RAILWAY STATION & CITY CENTRE • WALKING DISTANCE OF SHOPS & SCHOOLS • SOUTH FACING EASY MAINTENANCE GARDEN WITH ARTIFICIAL LAWN • LEASED SOLAR PANELS (25 years with 9 years remaining)



HUDSON
HOMES



Approximate total area⁽¹⁾
1606.88 ft²
149.28 m²



(1) Excluding balconies and terraces

While every attempt has been made to ensure accuracy, all measurements are approximate, not to scale. This floor plan is for illustrative purposes only.

GIRAFFE360

01733 788222

info@hudson-homes.co.uk

8 Crusader court

PE7 3PU