

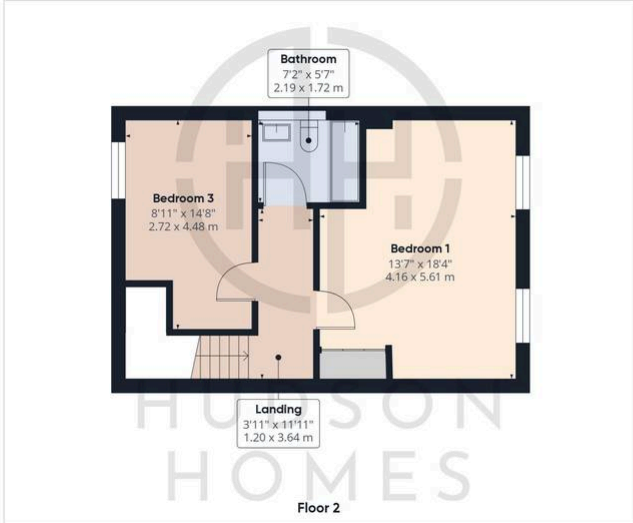
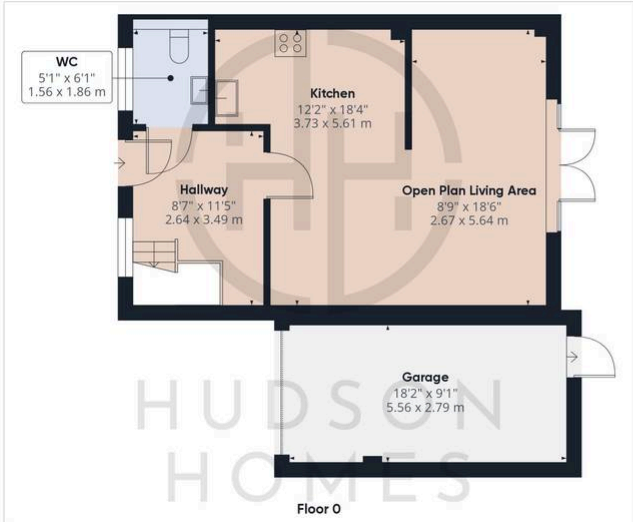


4 Lima Way, Peterborough

£300,000 Freehold

BOVIS BUILT FOREVER HOME • INTERNAL FLOOR AREA 1543 sqft • SPACIOUS CLOAKROOM can be WETROOM/SHOWER ROOM • INTEGRATED KITCHEN with BREAKFAST ISLAND • OPEN PLAN LIVING / GAMES ROOM • 3/4 BEDROOMS & 1/2 RECEPTION ROOMS • 1st FLOOR LIVING ROOM or BEDROOM FOUR • SPACIOUS HALLWAY (SPACE FOR LIFT) • SINGLE GARAGE & DRIVEWAY • EASY MAINTENANCE GARDEN with ARTIFICIAL LAWN





Approximate total area⁽¹⁾
1543.43 ft²
143.39 m²

(1) Excluding balconies and terraces

While every attempt has been made to ensure accuracy, all measurements are approximate, not to scale. This floor plan is for illustrative purposes only.

Calculations were based on RICS IPMS 3C standard. Please note that calculations were adjusted by a third party and therefore may not comply with RICS IPMS 3C.

GIRAFFE360

Hudson Homes
8 Crusader Court
Yaxley
PE7 3PY
01733 788222