

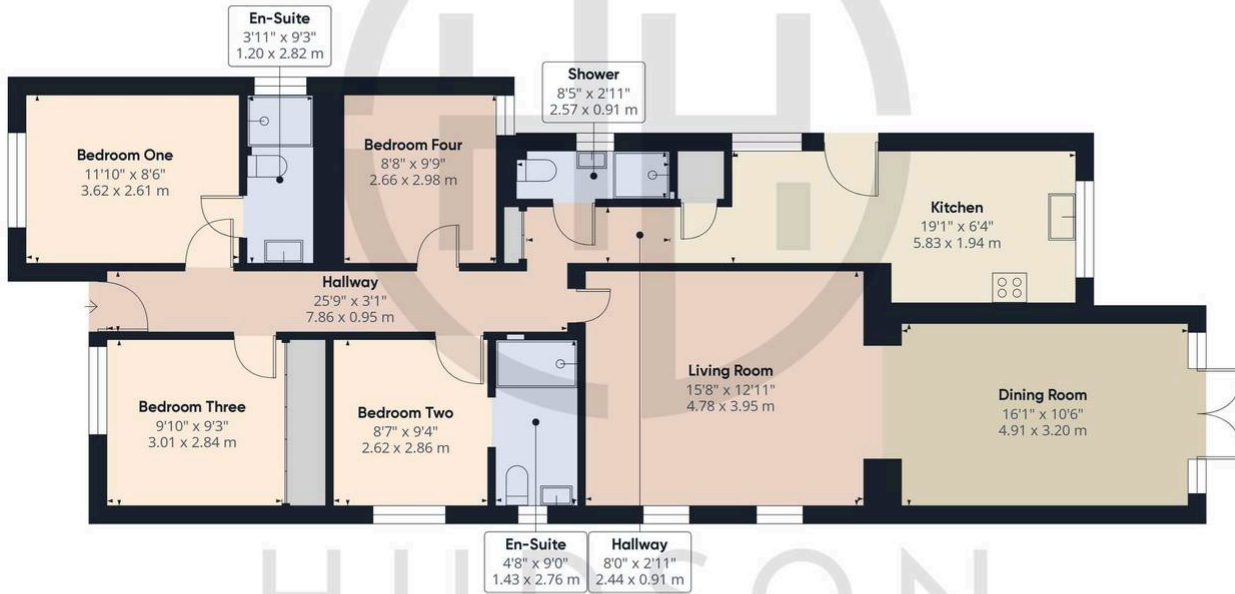
## 5 Fengate Mobile Home Park, Peterborough

£90,000 Leasehold

OVER 45 AGE LIMITED • OPEN PLAN LIVING WITH INTEGRATED KITCHEN • SHOWER ROOM • PARKING FOR TWO VEHICLES • PITCH FEES ARE £181 PER MONTH • ELECTRIC £29 PER MONTH & GAS £40 PER MONTH • COUNCIL TAX BAND A £1388 • WITHIN A MILE OF PETERBOROUGH TRAIN STATION & CITY CENTRE • IDEAL RETIREMENT HOME • ONE DOUBLE BEDROOM & ONE SINGLE BEDROOM



HUDSON  
HOMES



Approximate total area<sup>(1)</sup>  
 1141.95 ft<sup>2</sup>  
 106.09 m<sup>2</sup>

(1) Excluding balconies and terraces

While every attempt has been made to ensure accuracy, all measurements are approximate, not to scale. This floor plan is for illustrative purposes only.

Calculations are based on RICS IPMS 3C standard.

GIRAFFE360

01733 78822

info@hudson-homes.co.uk

8 Crusader court

PE7 3PU