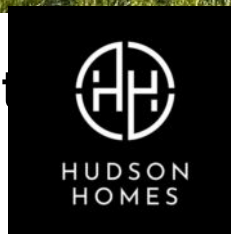




64 Constantine Drive, Stanground South
Peterborough



£150,000



64 Constantine Drive

Stanground South, Peterborough

This charming ground floor flat presents an excellent opportunity for those seeking a convenient and comfortable living space in a desirable area. Boasting two bedrooms, this property is perfectly suited for those looking for an ideal retirement retreat or first home. Tastefully decorated throughout, the open-plan living area seamlessly connects the living room, dining area, and kitchen, creating a warm and inviting ambience. The property benefits from two allocated parking spaces, along with a wealth of local amenities just a short walk away, making daily errands a breeze. With a council tax band of B at £1610, a generous 998-year lease from 2019, and manageable annual ground rent of £125.00 per year which is £10.41 per month and service charges of £1377.42 per year which is £114.76 per month, this flat offers both financial security and ease of living. Viewings are highly recommended to fully appreciate the wonderful condition and charm of this delightful home.

Externally, the property features a communal grass area to the front, providing a green and peaceful space to relax and unwind. Furthermore, the convenience of having two allocated parking spaces in the car park ensures that residents can securely park their vehicles without any hassle. The communal areas are well-maintained, adding to the overall appeal of the property and creating a welcoming atmosphere for all occupants. Whether you are enjoying the quiet surroundings or taking advantage of the proximity to local shops and





Approximate total area⁽¹⁾

528.72 ft²

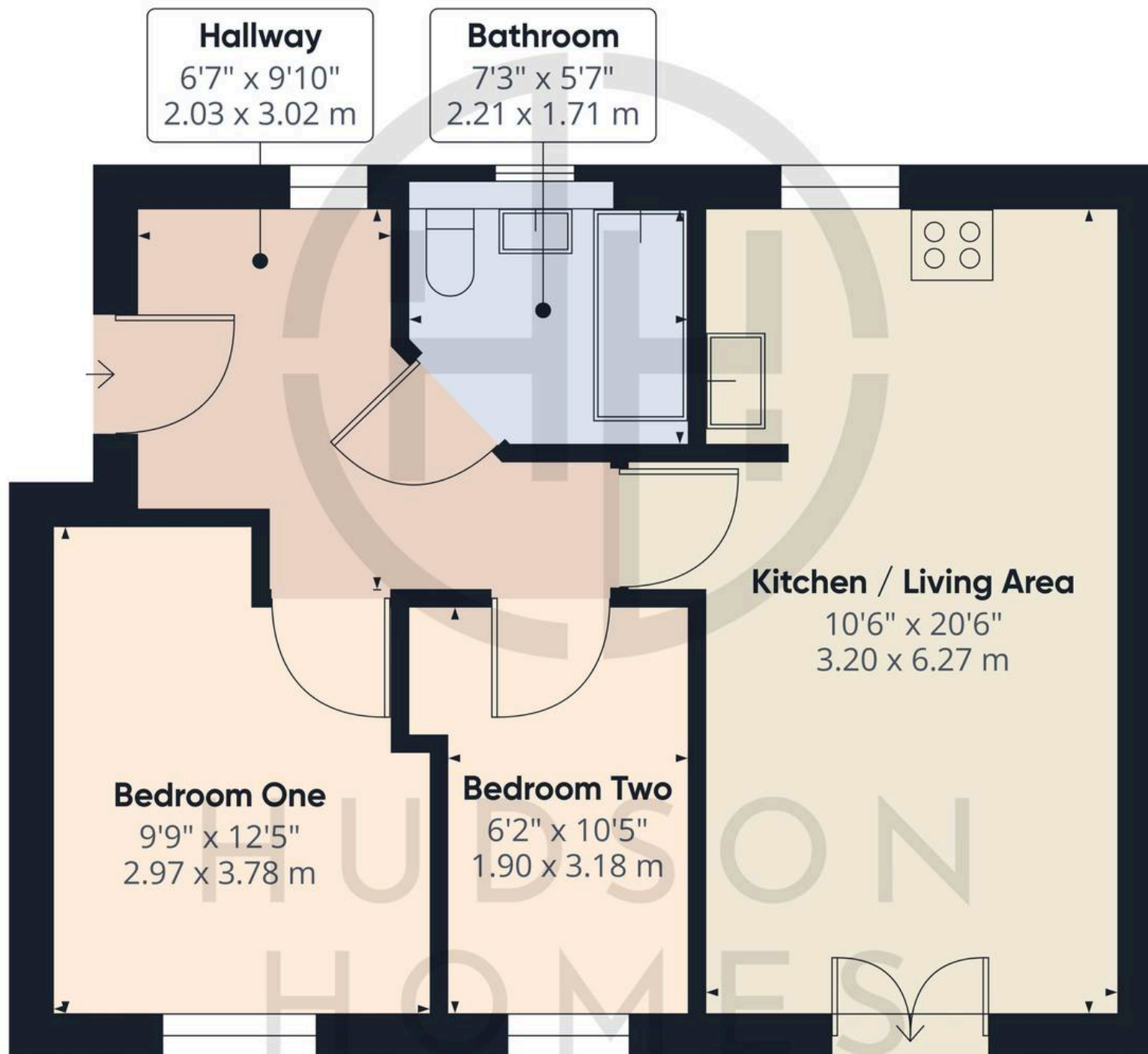
49.12 m²

(1) Excluding balconies and terraces

While every attempt has been made to ensure accuracy, all measurements are approximate, not to scale. This floor plan is for illustrative purposes only.

Calculations are based on RICS IPMS 3C standard.

GIRAFFE360





Hudson Homes Estate Agents

8 Crusader Court, Yaxley - PE7 3PU

01733 788222

info@hudson-homes.co.uk

www.hudson-homes.co.uk/

