

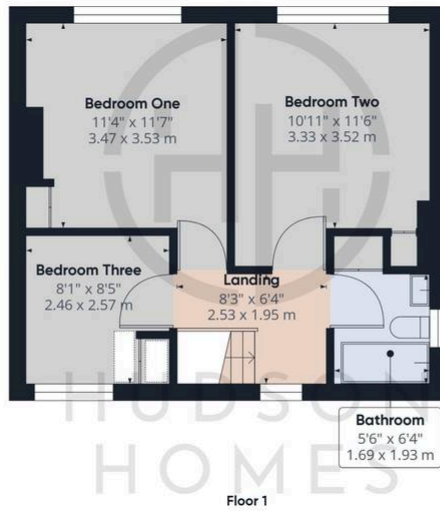
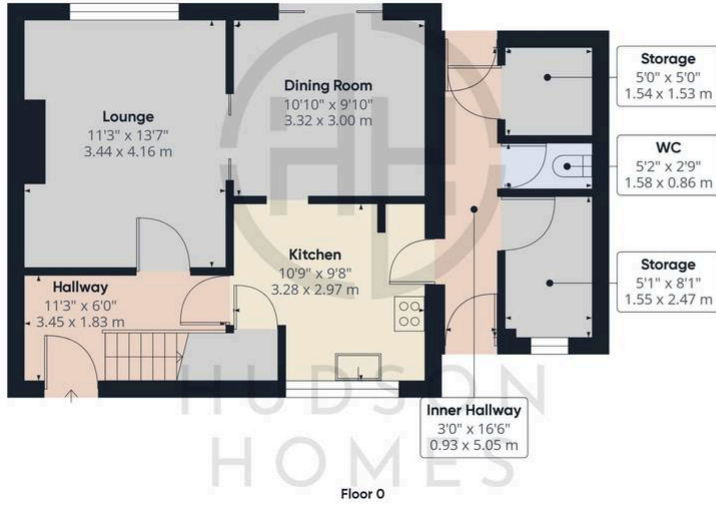
86 Chestnut Avenue, Peterborough

£240,000 Freehold

ENCLOSED SOUTH FACING GARDEN • NO FORWARD CHAIN • TWO RECEPTION ROOMS • TWO DOUBLE BEDROOMS & ONE SINGLE BEDROOM • TWO STORE ROOMS PLUS WC OFF TO THE SIDE OF THE HOUSE • ESTABLISHED FULLY ENCLOSED REAR GARDEN • DRIVEWAY PARKING FOR 3 VEHICLES • SHORT WALK TO SHOPS & SCHOOLS • EX RENTAL PROPERTY NEEDING REFURBISHMENT



HUDSON
HOMES



Approximate total area⁽¹⁾
977.48 ft²
90.81 m²

(1) Excluding balconies and terraces

While every attempt has been made to ensure accuracy, all measurements are approximate, not to scale. This floor plan is for illustrative purposes only.

Calculations are based on RICS IPMS 3C standard.

GIRAFFE360

You can include any text here. The text can be modified upon generating your brochure.