

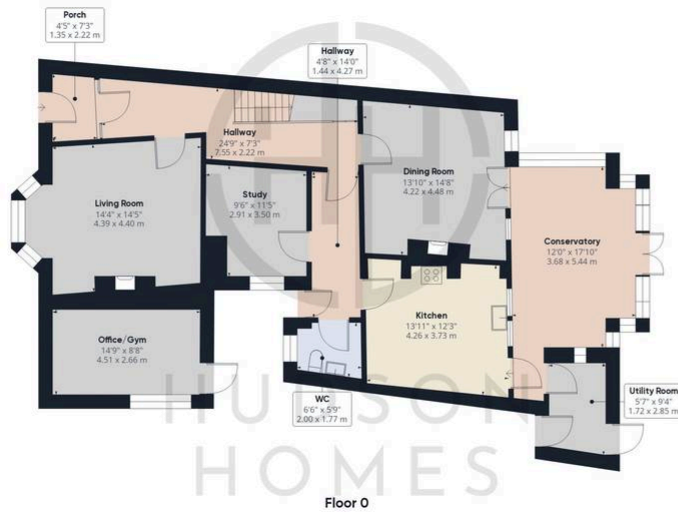
## 91 Thorpe Road, Peterborough

£725,000 Freehold

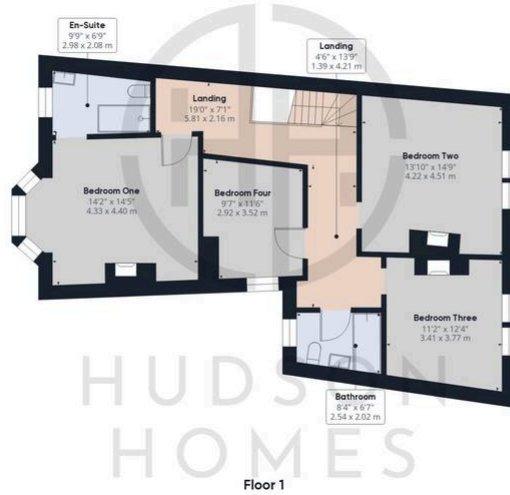
NO FORWARD CHAIN • 5 RECEPTION ROOMS & FOUR BEDROOMS • CLOAKROOM, BATHROOM & EN-SUITE SHOWER ROOM • NEW KITCHEN, EN-SUITE, BATHROOM & CLOAKROOM • NEW IDEAL GAS CENTRAL HEATING BOILER INSTALLED 2024 • INTERNAL FLOOR AREA 2,164 sqft • GARAGE CONVERSION INTO OFFICE OR GYM • WITHIN A MILE OF PETERBOROUGH TRAIN STATION & CITY CENTRE • SHORT WALK TO THE PETERBOROUGH SCHOOL & SHOPS • P... WITH CHARACTER FEATURES



HUDSON  
HOMES



**Approximate total area<sup>(1)</sup>**  
 2318.99 ft<sup>2</sup>  
 215.44 m<sup>2</sup>



(1) Excluding balconies and terraces

While every attempt has been made to ensure accuracy, all measurements are approximate, not to scale. This floor plan is for illustrative purposes only.

Calculations are based on RICS IPMS 3C standard.

GIRAFFE360

You can include any text here. The text can be modified upon generating your brochure.