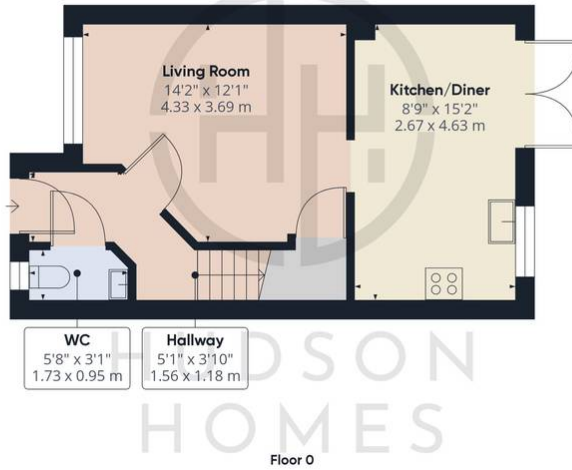


## 11 Ash Close, Yaxley

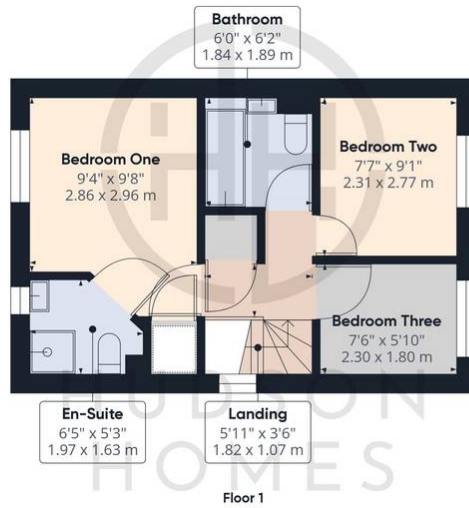
£255,000 Freehold

IMMACULATE CONDITION THROUGHOUT • INTEGRATED KITCHEN/DINING ROOM WITH FRENCH DOORS TO GARDEN • EN-SUITE & BUILT IN CUPBOARD TO BEDROOM ONE • BATHROOM & CLOAKROOM • FULLY ENCLOSED EASY MAINTENANCE LANDSCAPED GARDEN • TWO ALLOCATED PARKING SPACES TO THE FRONT • SITUATED IN A QUIET CUL-DE-SAC OF 6 PROPERTIES • COUNCIL TAX BAND C £2064 • INTERNAL FLOOR AREA 764 sqft • IDEAL 1ST TIME BUY





**Approximate total area<sup>(1)</sup>**  
695.13 ft<sup>2</sup>  
64.58 m<sup>2</sup>



(1) Excluding balconies and terraces

While every attempt has been made to ensure accuracy, all measurements are approximate, not to scale. This floor plan is for illustrative purposes only. Calculations are based on RICS IPMS 3C standard.

GIRAFFE360

You can include any text here. The text can be modified upon generating your brochure.