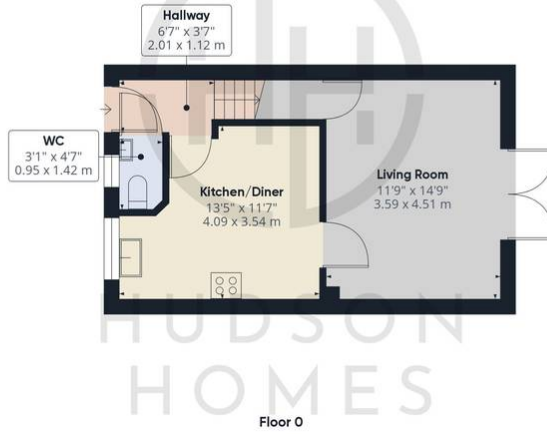


## 6 Harper Crescent, Peterborough

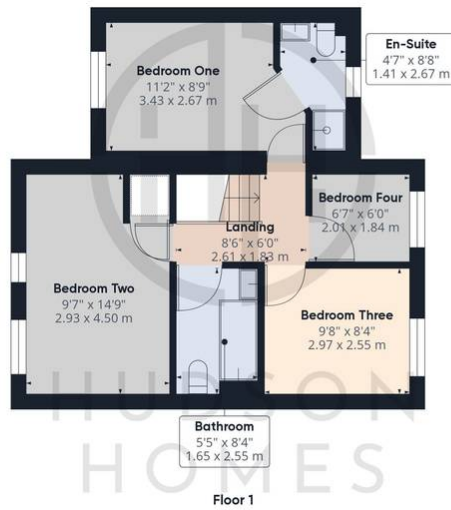
£260,000 Freehold

NO FORWARD CHAIN • INTEGRATED KITCHEN/DINING ROOM • BATHROOM & CLOAKROOM • EN-SUITE SHOWER ROOM TO BEDROOM ONE • BEDROOM TWO HAS JULIET BALCONY FRONT FACING • LARGE ENCLOSED SOUTH FACING REAR GARDEN • CARPORT WITH OFF ROAD PARKING FOR TWO VEHICLES • CLOSE TO SHOPS & SCHOOLS • EASY ACCESS TO THE A47 & ALL MAIN ROAD NETWORKS • ON A MAIN BUS ROUTE





Approximate total area<sup>(1)</sup>  
853.9 ft<sup>2</sup>  
79.33 m<sup>2</sup>



(1) Excluding balconies and terraces

While every attempt has been made to ensure accuracy, all measurements are approximate, not to scale. This floor plan is for illustrative purposes only.

GIRAFFE360

Hudson Homes  
8 Crusader Court  
Yaxley  
PE7 3PU  
01733 788222