



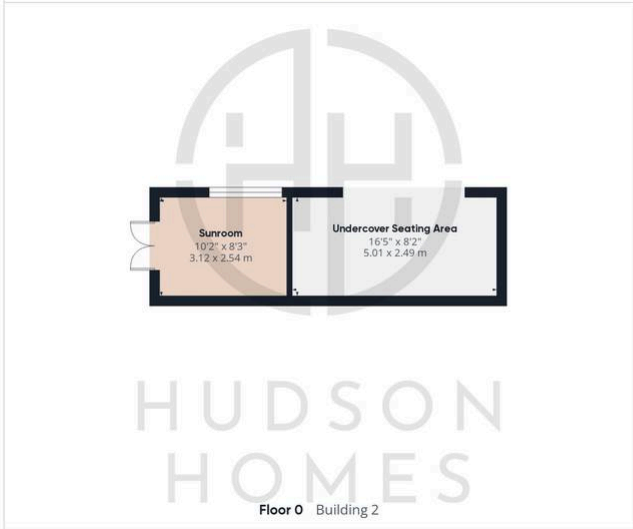
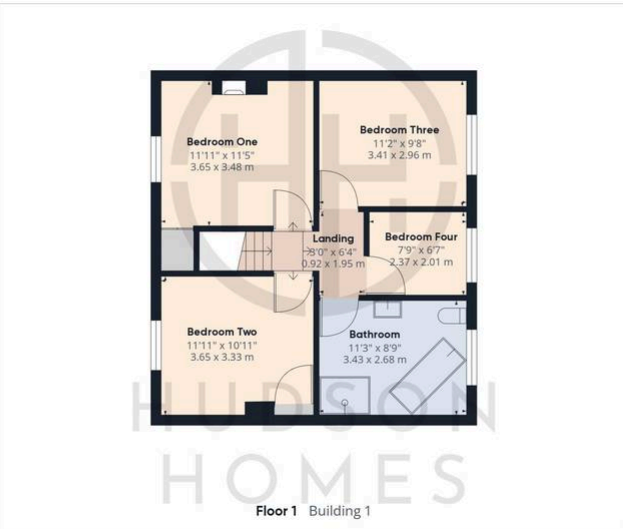
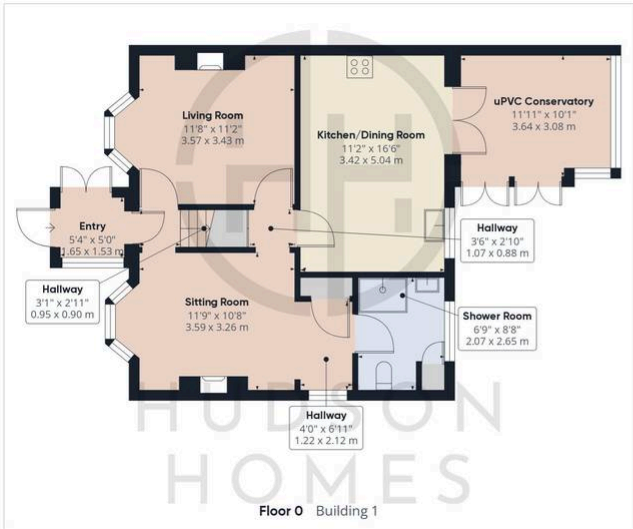
32 Peterborough Road, Farcet

£365,000 Freehold

OPEN FIRE PLACE IN LIVING ROOM & MULTI-FUEL BURNER IN SITTING ROOM • 4 PIECE BATHROOM SUITE & DOWNSTAIRS SHOWER ROOM • THREE DOUBLE BEDROOMS & ONE SINGLE BEDROOM • INTEGRATED KITCHEN/DINING ROOM • VICTORIAN STYLE uPVC CONSERVATORY • ESTABLISHED GARDEN WITH OUTDOOR SWIMMING POOL, POND & UNDERCOVER SEATING AREAS • SUMMER HOUSE & TWO UNDERCOVER SEATING AREA • DRIVEWAY PARKING FOR 4 VEHICLES • VIEWS TO THE REAR • REPLACEMENT GAS



HUDSON
HOMES



Approximate total area⁽¹⁾
 1523.52 ft²
 141.54 m²

(1) Excluding balconies and terraces

While every attempt has been made to ensure accuracy, all measurements are approximate, not to scale. This floor plan is for illustrative purposes only.

Calculations are based on RICS IPMS 3C standard.

GIRAFFE360

01733 788222

info@hudson-homes.co.uk

8 Crusader court

PE7 3PU