

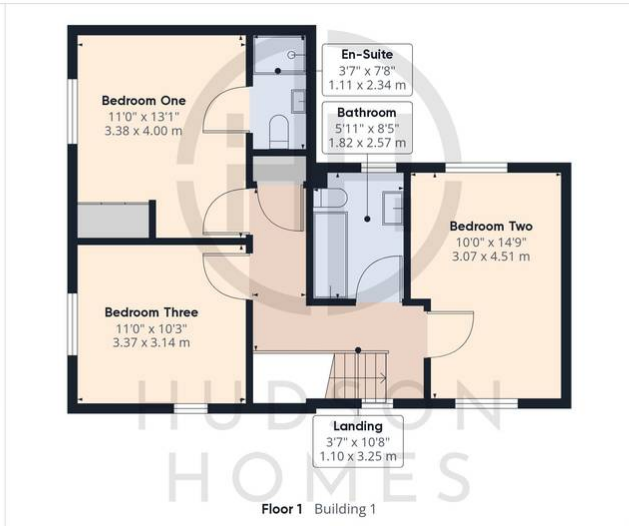


23 Thistle Close, Yaxley

£315,000 Freehold

FIELD VIEWS • INTEGRATED KITCHEN/DINING ROOM • BEDROOM ONE HAS EN-SUITE & FITTED WARDROBES • THREE DOUBLE BEDROOMS • CLOAKROOM & FAMILY BATHROOM • GARDEN OFFICE WITH ELECTRICITY • FULLY ENCLOSED WRAP AROUND GARDEN • TWO ALLOCATED PARKING SPACES AT THE REAR • INTERNAL FLOOR AREA 1,163 sqft • COUNCIL TAX BAND C £1851





Approximate total area⁽¹⁾
1183.06 ft²
109.91 m²



(1) Excluding balconies and terraces

While every attempt has been made to ensure accuracy, all measurements are approximate, not to scale. This floor plan is for illustrative purposes only.

Calculations are based on RICS IPMS 3C standard.

GIRAFFE360