

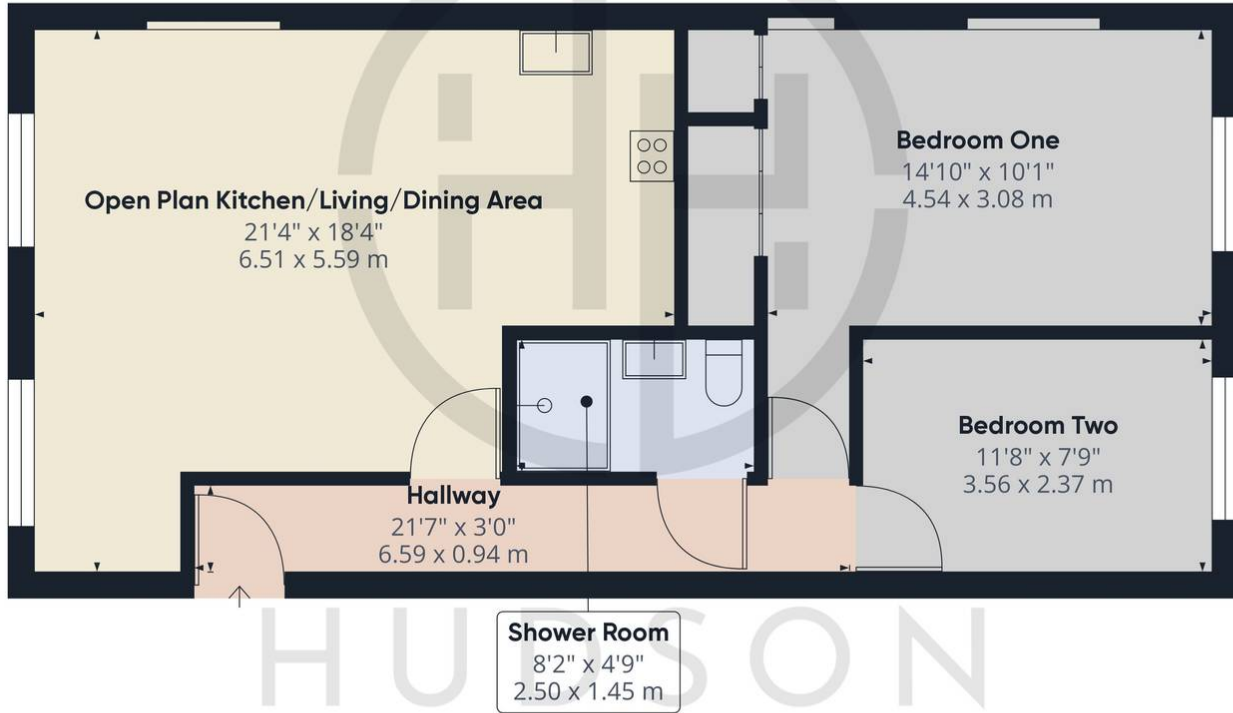


Apt 5, Kings Walk King Street, Kettering

£100,000 Leasehold

2nd FLOOR APARTMENT • OPEN PLAN LIVING/DINING/KITCHEN • BEDROOM ONE with FITTED WARDROBES • SHOWER ROOM • 125 YEAR LEASE from 01/01/2005 • GROUND RENT OF £175 PA & SERVICE CHARGE £1200 half yearly £2400PA • ALLOCATED PARKING SPACE • INTERNAL FLOOR AREA 592 sq ft • 1.2 MILES TO KETTERING RAILWAY STATION • COUNCIL TAX BAND A £1461





Approximate total area⁽¹⁾
692.55 ft²
64.34 m²

(1) Excluding balconies and terraces

While every attempt has been made to ensure accuracy, all measurements are approximate, not to scale. This floor plan is for illustrative purposes only.
Calculations are based on RICS IPMS 3C standard.

GIRAFFE360

01733 788222

info@hudson-homes.co.uk

8 Crusader Court

PE7 3PU