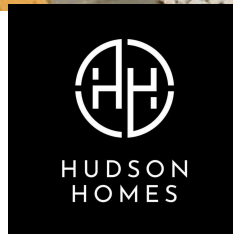




3 The Conifers Mere View, Yaxley
Peterborough



£275,000



3 The Conifers Mere View

Yaxley, Peterborough

Presenting this charming 2-bedroom end of terrace bungalow, ideally situated within a peaceful residential area. Boasting a no forward chain policy, this property offers a convenient move-in opportunity. The interior features two generously sized double bedrooms, an integrated kitchen, and an inviting open-plan living space that promotes comfort and functionality. Completing the layout is a modern shower room for added convenience.

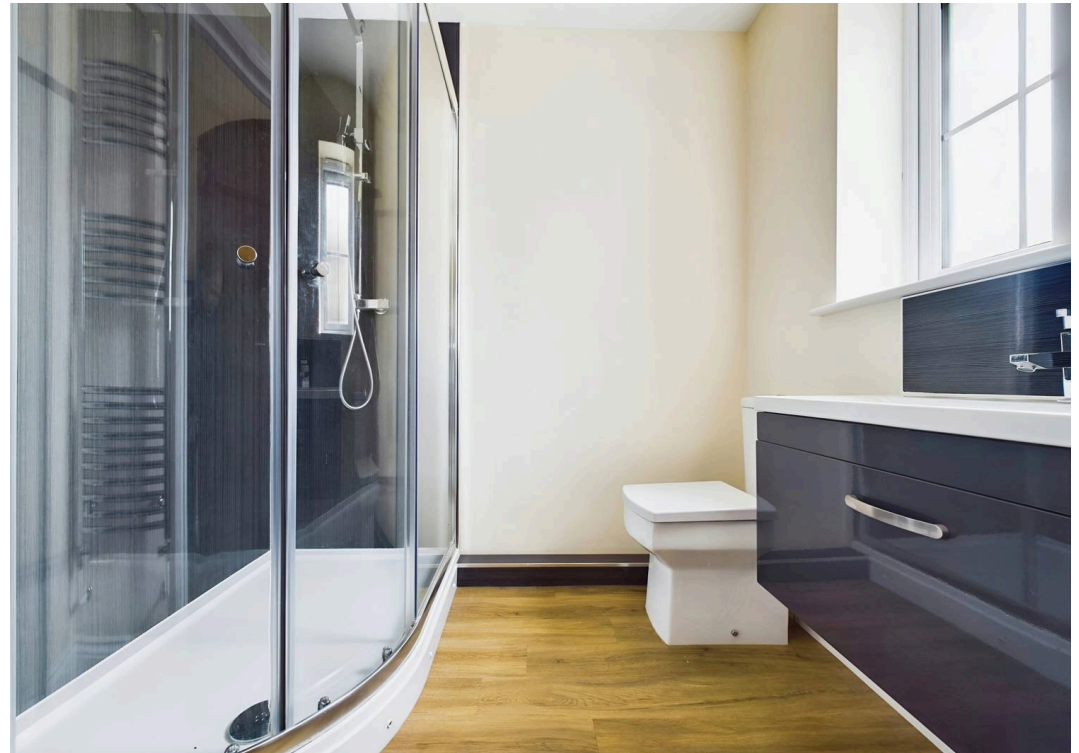
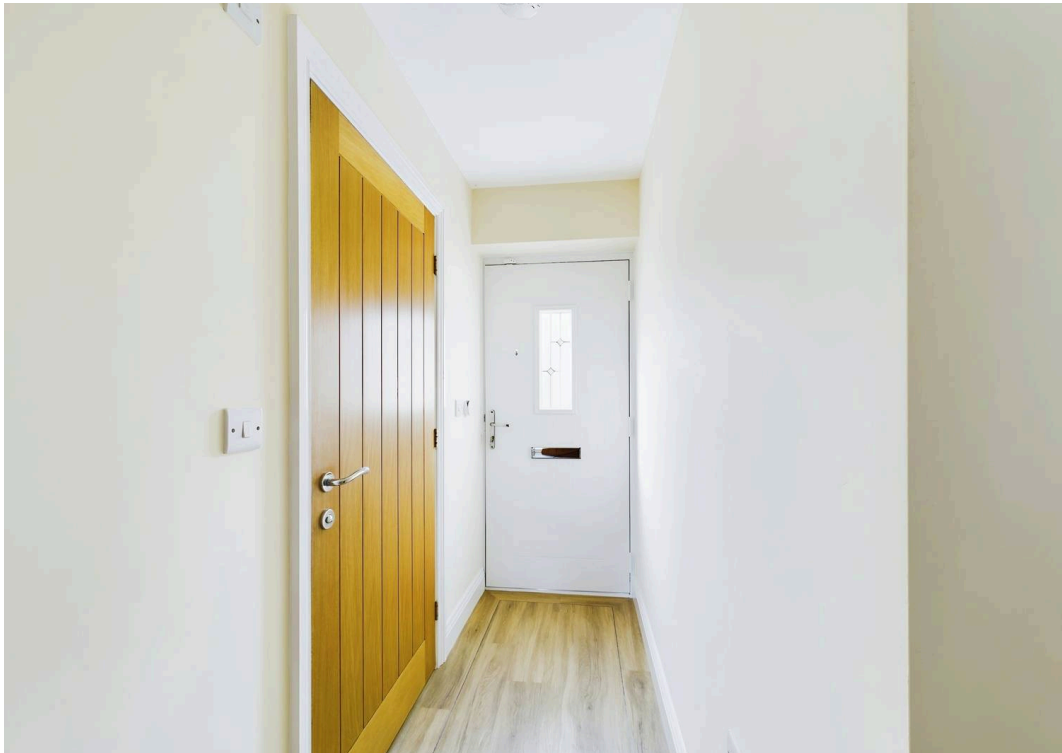
This residence also boasts a private enclosed rear garden for tranquil outdoor enjoyment. Stay cosy throughout the seasons with the benefit of gas central heating and uPVC double glazing. Parking will never be an issue with two allocated parking spaces at your disposal. Furthermore, peace of mind is ensured with 8 years remaining on a 10-year LABC warranty.

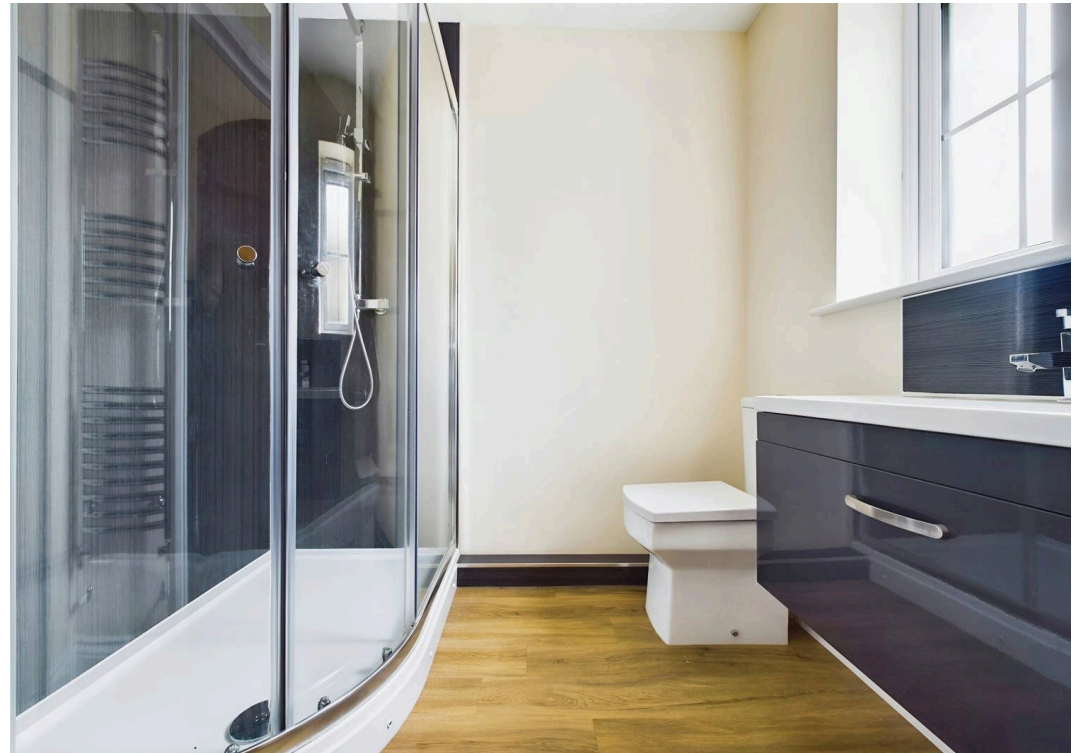
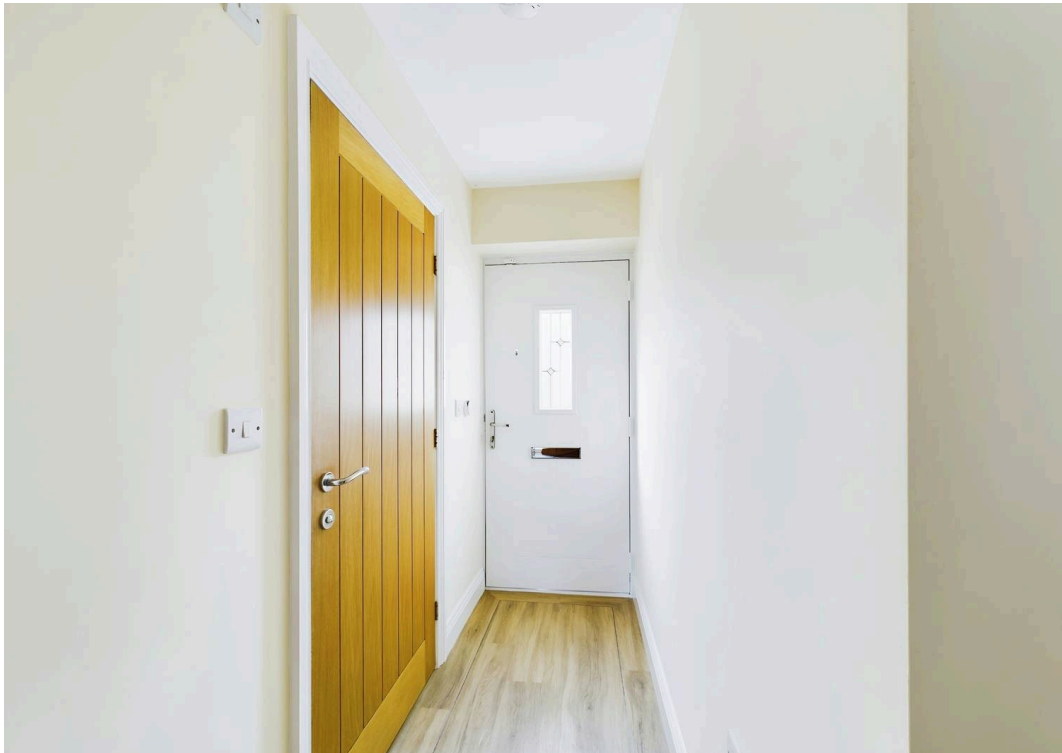
Perfectly blending comfort and practicality, this property presents an ideal opportunity for those seeking a delightful home in a sought-after location.

Council Tax band: TBD

Tenure: Freehold

- NO FORWARD CHAIN
- INTEGRATED KITCHEN
- OPEN PLAN LIVING
- SHOWER ROOM
- PRIVATE ENCLOSED REAR GARDEN
- GAS CENTRAL HEATING & uPVC DOUBLE GLAZING
- 2 ALLOCATED PARKING SPACES







HUDSON
HOMES



Approximate total area⁽¹⁾

683.94 ft²

63.54 m²

(1) Excluding balconies and terraces

While every attempt has been made to ensure accuracy, all measurements are approximate, not to scale. This floor plan is for illustrative purposes only.

Calculations are based on RICS IPMS 3C standard.

GIRAFFE 360



Hudson Homes Estate Agents

8 Crusader Court, Yaxley - PE7 3PU

01733 788222

info@hudson-homes.co.uk

www.hudson-homes.co.uk/

