

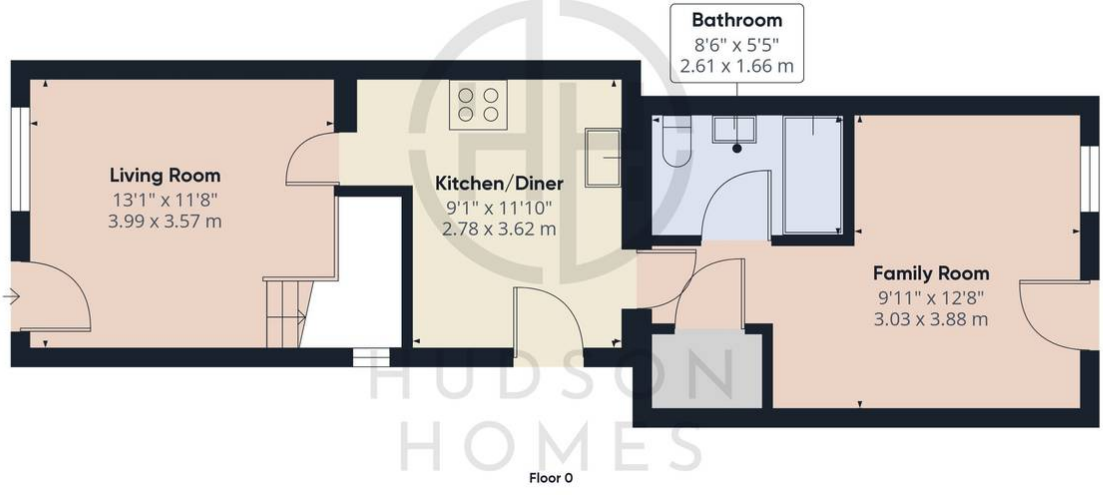


432 March Road, Whittlesey

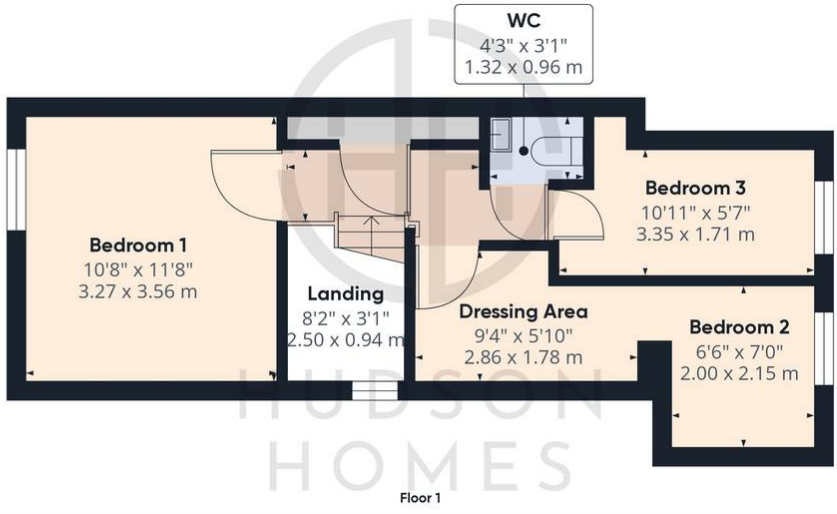
£215,000 Freehold

DOUBLE EXTENSION TO THE REAR • KITCHEN/DINER • TWO RECEPTION ROOMS • GROUND FLOOR BATHROOM & UPSTAIRS CLOAKROOM • THREE BEDROOMS • FIELD VIEWS TO THE FRONT & REAR ASPECT • TWO OFF ROAD PARKING SPACES • GAS CENTRAL HEATING • COUNCIL TAX BAND A £1554 pa • EASY ACCESS TO MARCH, WISBECH & WHITTLESEY





Approximate total area⁽¹⁾
882.21 ft²
81.96 m²



(1) Excluding balconies and terraces

While every attempt has been made to ensure accuracy, all measurements are approximate, not to scale. This floor plan is for illustrative purposes only.

GIRAFFE360