



14 William Nichols Court, Huntly Grove

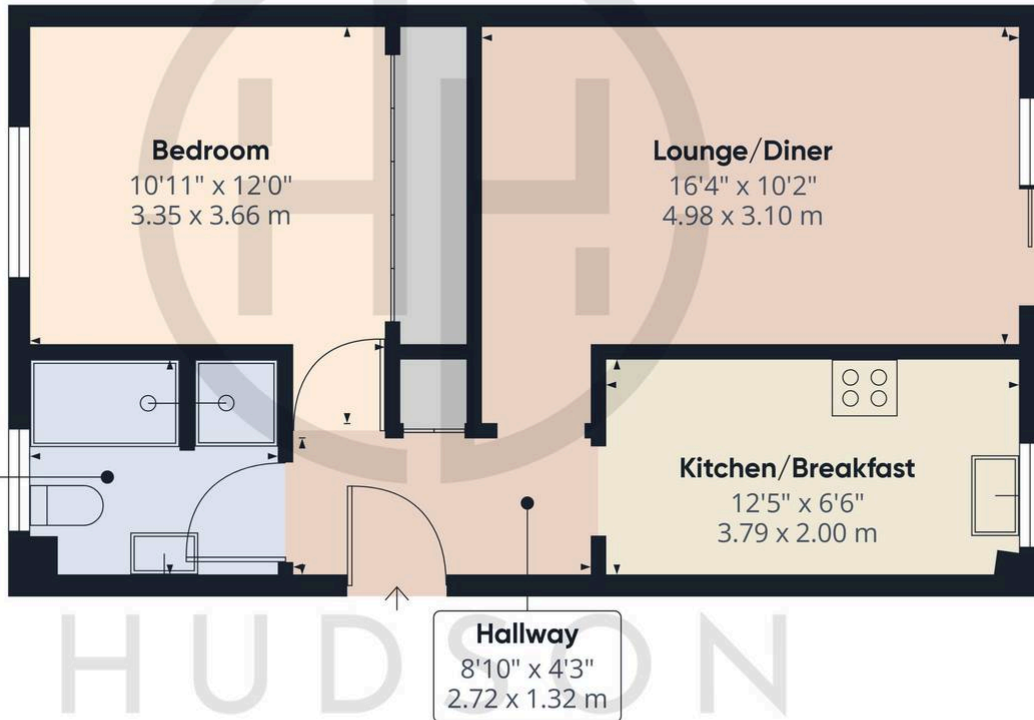
£70,000 Leasehold

NO FORWARD CHAIN • KITCHEN/BREAKFAST ROOM • WET ROOM WITH STORAGE AREA • ONE DOUBLE BEDROOM WITH FITTED WARDROBES • SINGLE GARAGE IN BLOCK • CASH BUYERS ONLY AS 62 YEARS REMAINING ON THE CURRENT LEASE (NEEDS EXTENDING) • SHORT WALK TO THE TRAIN STATION & CITY CENTRE • CURRENT NIC EIC ELECTRICAL CERTIFICATE • ESTIMATED RENTAL VALUE - £850 PCM • GROUND

RENT £1750pa



HUDSON
HOMES



Approximate total area⁽¹⁾
489.11 ft²
45.44 m²

(1) Excluding balconies and terraces

While every attempt has been made to ensure accuracy, all measurements are approximate, not to scale. This floor plan is for illustrative purposes only.

Calculations are based on RICS IPMS 3C standard.

GIRAFFE360

You can include any text here. The text can be modified upon generating your brochure.