

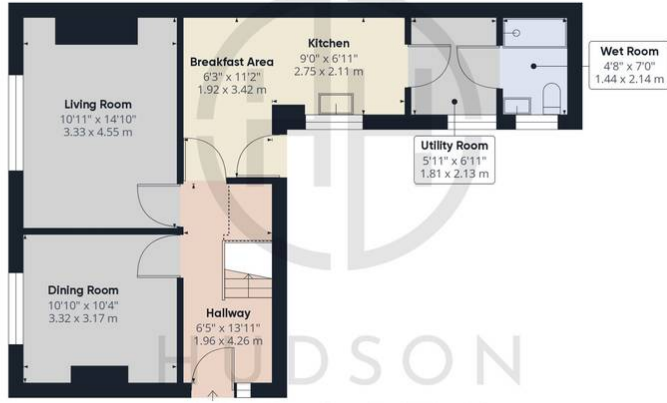


5 Hillcrest Avenue, Yaxley

£300,000 Freehold

FANTASTIC FULLY REFURBISHED FAMILY HOME WITH LARGE ENCLOSED REAR GARDEN • REFITTED KITCHEN + INTEGRATED DISHWASHER & FRIDGE & UTILITY ROOM • TWO RECEPTION ROOMS & THREE GOOD SIZE BEDROOMS • NEW FACIAS & SOFFITS • FULLY REWIRED THROUGHOUT WITH NICEIC CERTIFICATE • FULLY REDECORATED THROUGHOUT WITH NEW CARPETS & WOOD EFFECT FLOORING • FURTHER POTENTIAL TO EXTEND OR BUILD A GARAGE (STP) • DRIVEWAY PARKING FOR 4 VEHICLES • PARTIALLY BOARDED LOFT SPACE WITH NEW GLOW WORM BOILER • UPSTAIRS REFITTED BATHROOM & DOWNSTAIRS WET ROOM





Floor 0



Floor 1



Approximate total area⁽¹⁾

969.4 ft²
90.06 m²

Reduced headroom

13.67 ft²
1.27 m²

(1) Excluding balconies and terraces

Reduced headroom
..... Below 5 ft/1.5 m

While every attempt has been made to ensure accuracy, all measurements are approximate, not to scale. This floor plan is for illustrative purposes only.
Calculations are based on RICS IPMS 3C standard.

GIRAFFE360

Hudson Homes

8 Crusader Court, Yaxley, Peterborough PE7 3PU

Phone: [01733 788222](tel:01733788222)

Email: info@hudson-homes.co.uk