



Old Court House London Road, Norman
Peterborough



HUDSON
HOMES

In Excess of £700,000

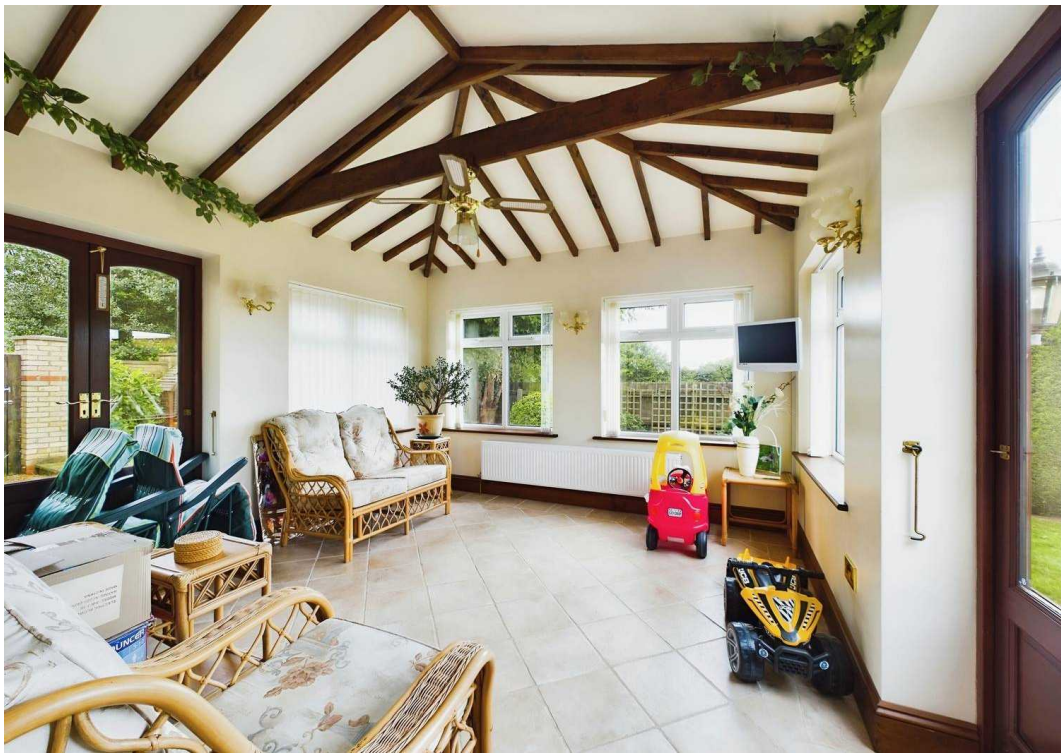


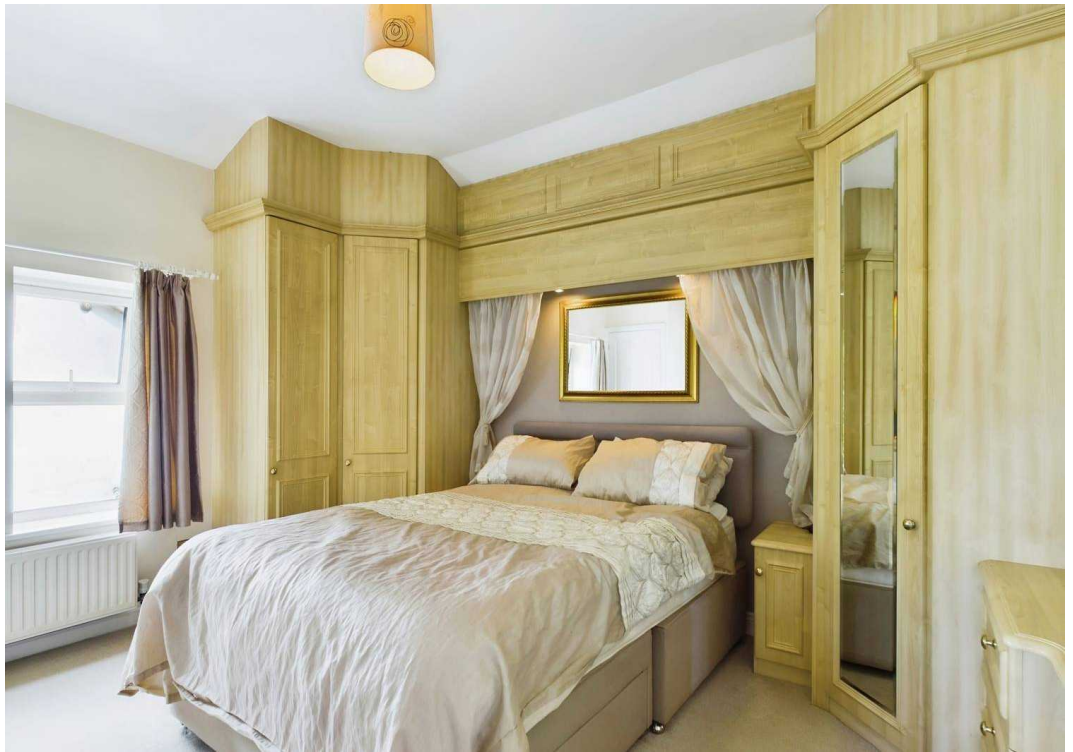
Old Court House London Road

Norman Cross, Peterborough

Nestled in a sought-after location, this impressive 5-bedroom detached house steeped in history dates back to 1868 when it was initially the courthouse for the local area. Boasting a generous internal floor area of 324 square metres, this period property has been meticulously refurbished by its current owners between 1999 and 2001, showcasing a blend of timeless charm and modern convenience. Offering a truly unique living experience, the residence features eight versatile reception rooms, five double bedrooms - some with fitted wardrobes, and a range of amenities including two downstairs shower rooms, an en-suite to the primary bedroom, a family bathroom, and a cloakroom. The property also includes a double garage with electrics and parking space for 8-10 vehicles, ensuring ample parking for residents and guests alike. Further enhancing its appeal, the rear living room features a cosy wood burner and bifold doors that open onto a delightful patio, while the well-equipped kitchen with a pantry, utility room, and a spacious laundry room caters to every culinary need. Additionally, there is a workshop complete with an AGA and shower room, offering the potential to be converted into an annexe if desired. Council Tax Band G at £3869. An immersive viewing is strongly recommended to fully appreciate the scope and quality of accommodation on offer.

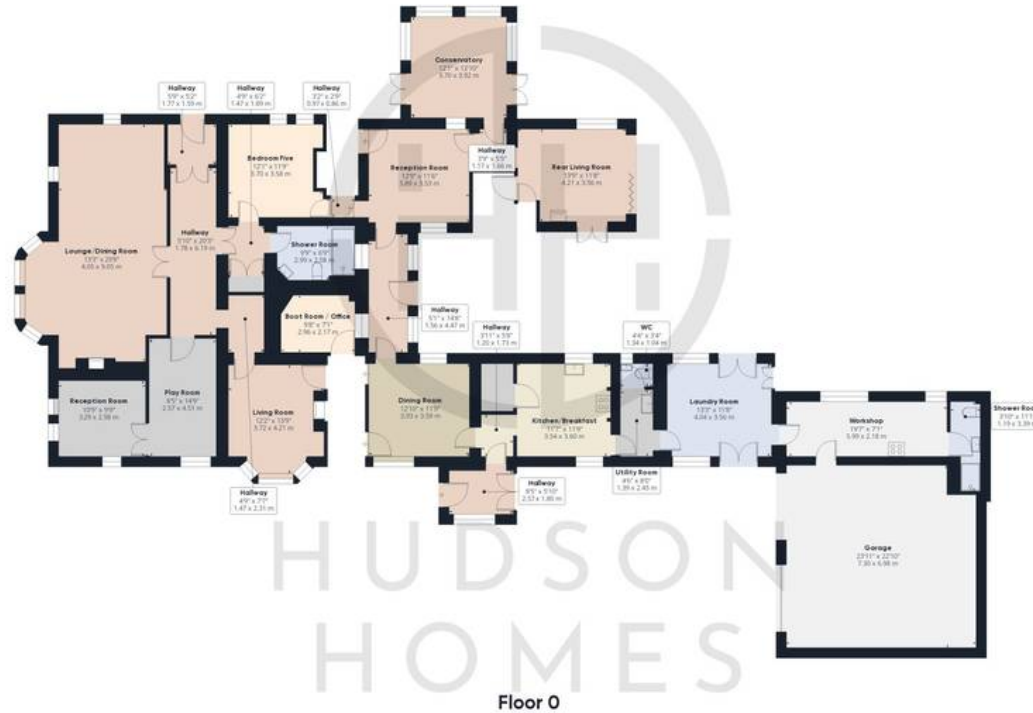
Externally, this magnificent residence is complemented by a substantial enclosed rear and side garden, providing a peaceful retreat







HUDSON
HOMES



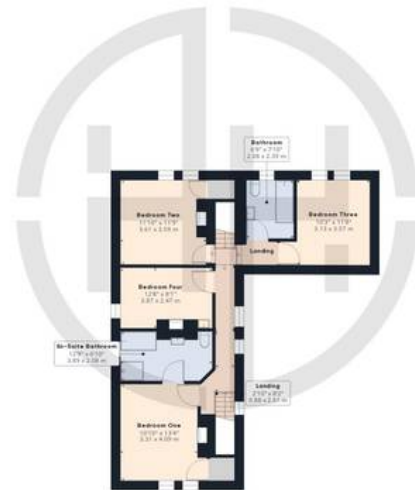
HUDSON
HOMES

Floor 0

Approximate total area⁽¹⁾

4065.42 ft²

377.69 m²



HUDSON
HOMES

Floor 1

(1) Excluding balconies and terraces

While every attempt has been made to ensure accuracy, all measurements are approximate, not to scale. This floor plan is for illustrative purposes only.

GIRAFFE360



Hudson Homes Estate Agents

8 Crusader Court, Yaxley - PE7 3PU

01733 788222

info@hudson-homes.co.uk

www.hudson-homes.co.uk/

