



2 Azalea Court, Yaxley
Peterborough



£200,000



2 Azalea Court

Yaxley, Peterborough

Welcome to your potential new home sweet home in this lovely semi-detached house. This 2-bedroom property comes with all the comforts you need, and the best part? No forward chain means you can move right in hassle-free. Step inside and feel the warmth of the gas central heating while admiring the world outside through the uPVC double glazing windows. The enclosed rear garden is your private oasis, complete with a delightful summer house and a deck that's just waiting for some outdoor furniture and a pergola to add that extra touch of charm.

Need parking space? No problem! There's a double garage and a driveway, so you'll never have to worry about where to park your car. The cul-de-sac location ensures peace and quiet, making it the ideal spot to settle down and enjoy a tranquil lifestyle.

With an internal floor area of 51 square metres, this cosy home offers a practical living space that's easy to maintain. The fitted kitchen is a chef's dream, with extra units for ample storage and integrated oven, hob, and extractor hood for all your cooking needs.

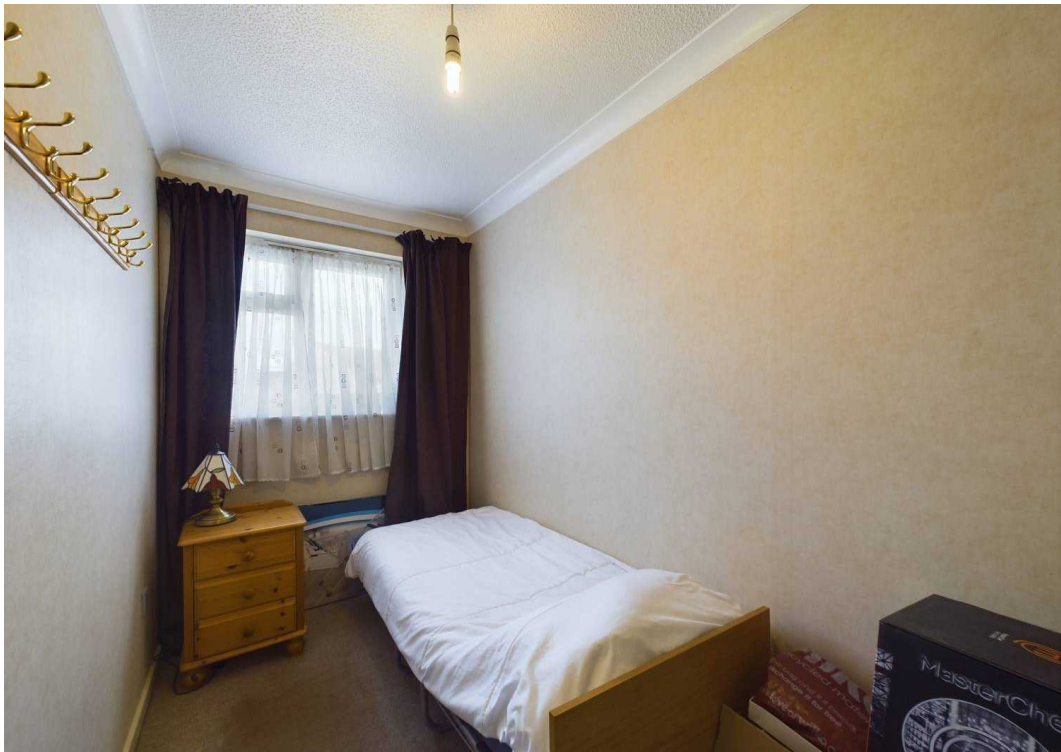
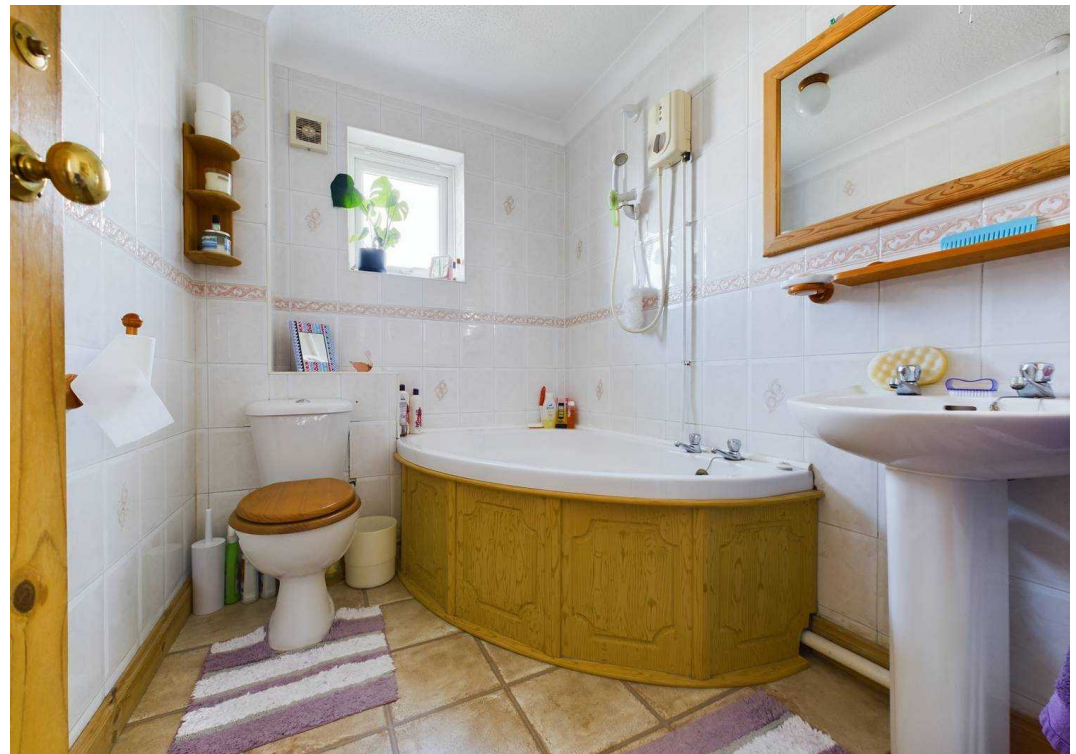
Convenience is key, and this property doesn't disappoint - it's close to local amenities and on a bus route, making it easy to run errands or hop on the bus for a day out. Plus, with a council tax band B at £1806, you'll appreciate the affordability that comes with this home.

Don't miss out on the chance to make this house your own. Whether you're looking for a starter home, a place to downsize, or a savvy investment, this property ticks all the right boxes. So why wait? Come take a look and see for yourself what makes this house a true gem in the heart of a welcoming neighbourhood.

Council Tax band: B

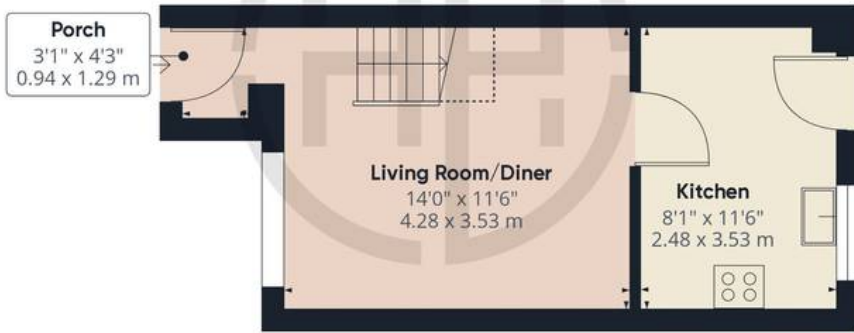
Tenure: Freehold



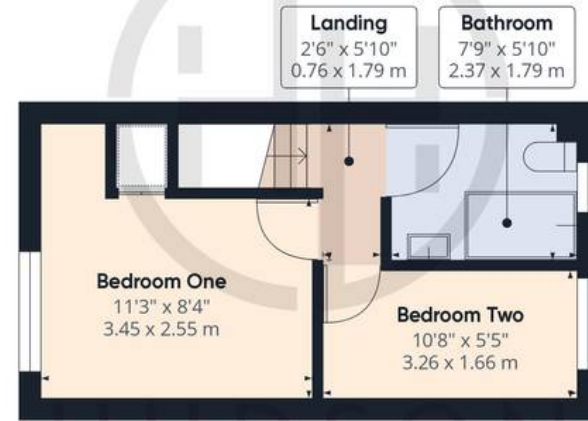




HUDSON
HOMES



Floor 0 Building 1



Floor 1 Building 1



Floor 0 Building 2



Floor 0 Building 3

Approximate total area⁽¹⁾

878.44 ft²

81.61 m²

Reduced headroom

13.02 ft²

1.21 m²

(1) Excluding balconies and terraces

Reduced headroom

..... Below 5 ft/1.5 m

While every attempt has been made to ensure accuracy, all measurements are approximate, not to scale. This floor plan is for illustrative purposes only.

Calculations are based on RICS IPMS 3C standard.

GIRAFFE360



Hudson Homes Estate Agents

8 Crusader Court, Yaxley - PE7 3PU

01733 788222

info@hudson-homes.co.uk

www.hudson-homes.co.uk/

