

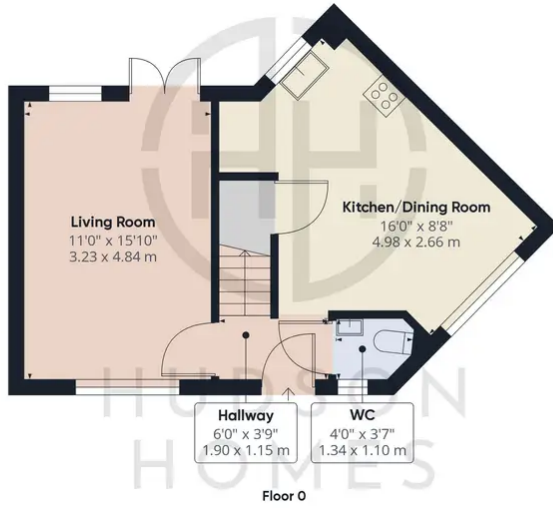


53 Draper Road, Peterborough

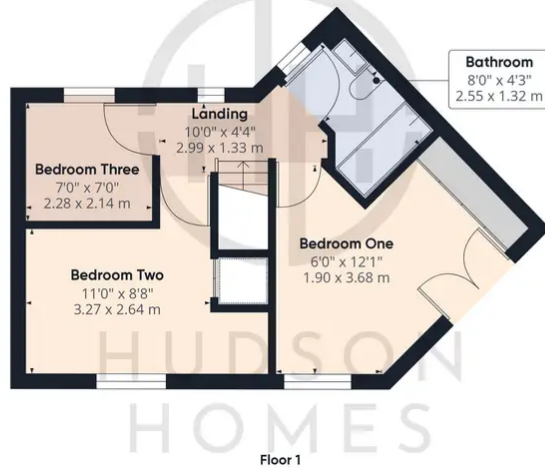
£260,000 Freehold

- EX SHOW HOUSE - IMMACULATE CONDITION
- RE-FITTED INTEGRATED KITCHEN/DINING ROOM
- NO FORWARD CHAIN
- COUNCIL TAX BAND C £1745pa
- LOW MAINTENANCE GARDEN DECK & ASTRO TURF
- CLOSE TO SHOPS & SCHOOLS
- BEDROOM ONE with FITTED WARDROBES
- DRIVEWAY PARKING





Approximate total area⁽¹⁾
796.96 ft²
74.04 m²



(1) Excluding balconies and terraces

While every attempt has been made to ensure accuracy, all measurements are approximate, not to scale. This floor plan is for illustrative purposes only.

GIRAFFE360

Hudson Homes

Address: 8 Crusader Court, Yaxley, Peterborough PE7 3PU

Phone:

[01733 788222](tel:01733788222) Email:

info@hudson-homes.co.uk